

Autophagy-Related Products Catalog

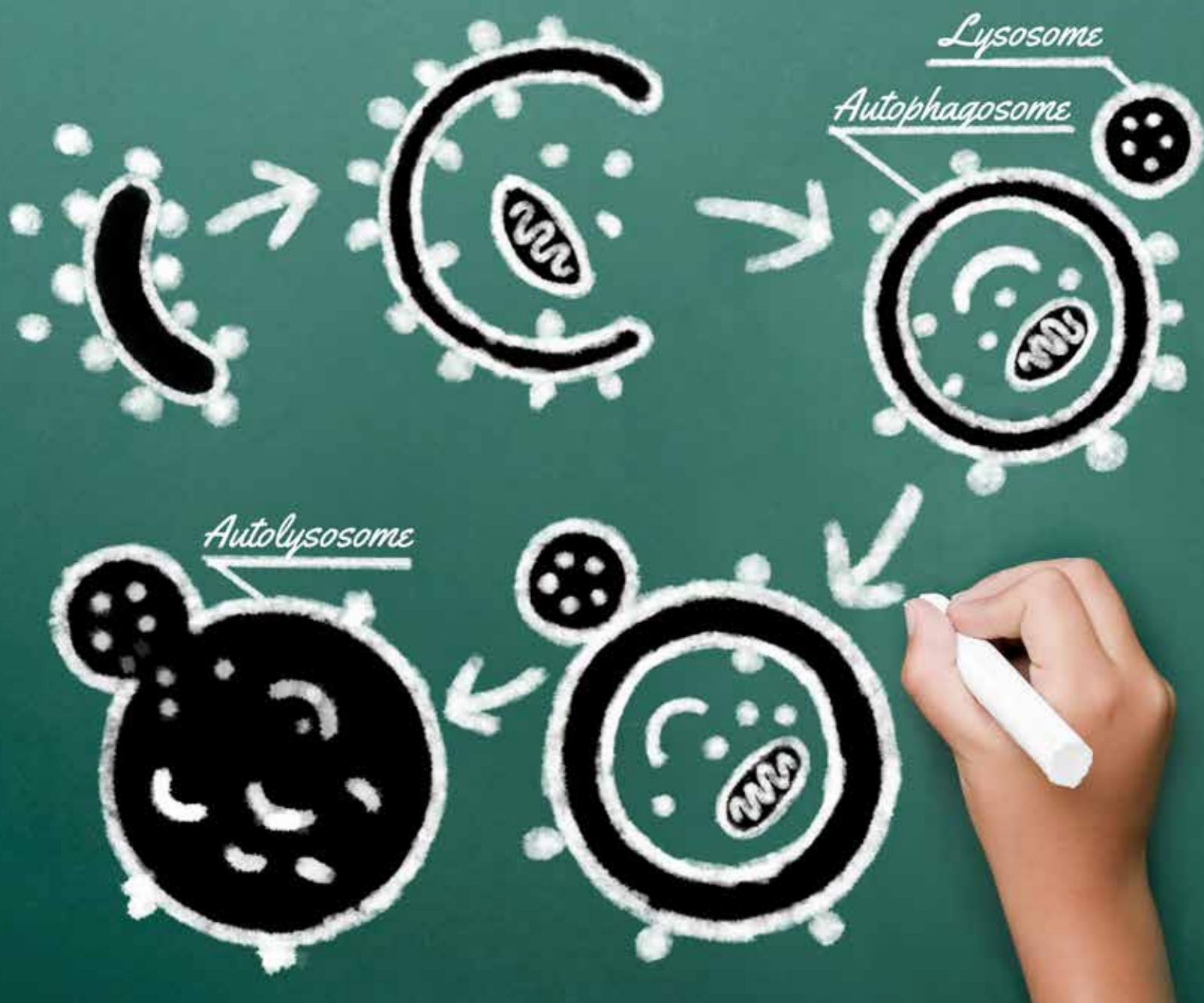


Table of contents

What is autophagy?	P.2
<i>Autophagy Watch</i> (for Autophagy Flux Assay and LC3 Immunostaining)	P.3
What is mitophagy?	P.5
Plasmid vectors for monitoring mitophagy activity	P.5
LC3 antibodies	P.7
p62 antibodies	P.9
Phospho-p62 antibodies	P.11
p62 and phospho-p62 ELISA Kit	P.13
Antibodies for phospho-p62-related proteins	P.14
Atg antibody series	P.15
Antibodies for autophagy-related proteins	P.18
Antibody sampler set	P.20
FAQs (LC3 antibody)	P.21
Product list	Back cover

Abbreviations and other product notes

(aff.): affinity purified

Species cross-reactivity: Hu: Human, Mo: Mouse, Rab: Rabbit, Hm: Hamster, Chi: Chicken, Mky: Monkey, Bov: Bovine,
Zeb: Zebrafish

(-): No cross-reactivity, (w): weak cross-reactivity

Application: WB: Western blotting, IP: Immunoprecipitation, FCM: Flow cytometry, IC: Immunocytochemistry,
IF: Immunofluorescence, IH: Immunohistochemistry, Immuno-EM: Immuno-electron microscopy

*: reported in articles(not confirmed by MBL).

HRP-Direct series antibodies are directly conjugated to HRP.

Alexa Fluor® is a registered trademark of Life Technologies Corporation.

MBL manufactures and markets under license from Life Technologies Corporation in the United States.

What is autophagy?

Autophagy is generally considered as a process to supply nutrients by self-digestion for cells to survive starvation. However, autophagy, along with the proteasome system, is also involved in the turnover of cellular components under normal conditions.

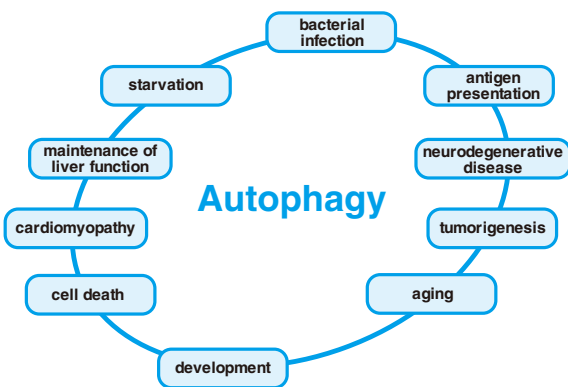
While proteasomes target and selectively degrade ubiquitinated proteins, autophagy degrades all the contents engulfed by autophagosomes, and, therefore, is called “the bulk degradation system.” In addition, selective autophagy pathways target cellular organelles, such as mitochondria and peroxisomes. These degradation mechanisms are respectively known as “mitophagy” and “pexophagy.” Various other autophagic mechanisms are also under investigation.

Although in the limelight in recent years, autophagy was first observed by electron microscopy over 40 years ago. Nevertheless, functional studies of autophagy did not progress rapidly because factors involved in the process remained unknown for a long period of time.

Dr. Yoshinori Ohsumi (currently of the Tokyo Institute of Technology) and his colleagues at the National Institute for Basic Biology isolated yeast strains that were unable to degrade the contents of autophagosomes, and successfully cloned the autophagy-related (APG/ATG) genes (Tsukada and Ohsumi, 1993). As of 2016, the number of ATG genes in budding yeast stands at 41. Many of these genes are conserved in mammals and plants (the amino acid sequence homology among species is limited, but the 3D structures are similar).

With the discovery of APG/ATG genes, functions of the gene products have been extensively studied, and details of the mechanism and physiological role of autophagy are being elucidated one after another.

Atg proteins, discovered in yeast, are conserved in a wide range of organisms, such as the slime molds, nematodes, flies, mammals, and plants. The functions of these proteins, however, have been highly diversified in each species. Further, recent studies have demonstrated that mammalian autophagy is involved not only in the starvation response, but also in antigen presentation, cell death, development, aging, tumorigenesis, and in the defense against bacterial infection. Thus, autophagy research will be increasingly important in understanding these processes in the body.

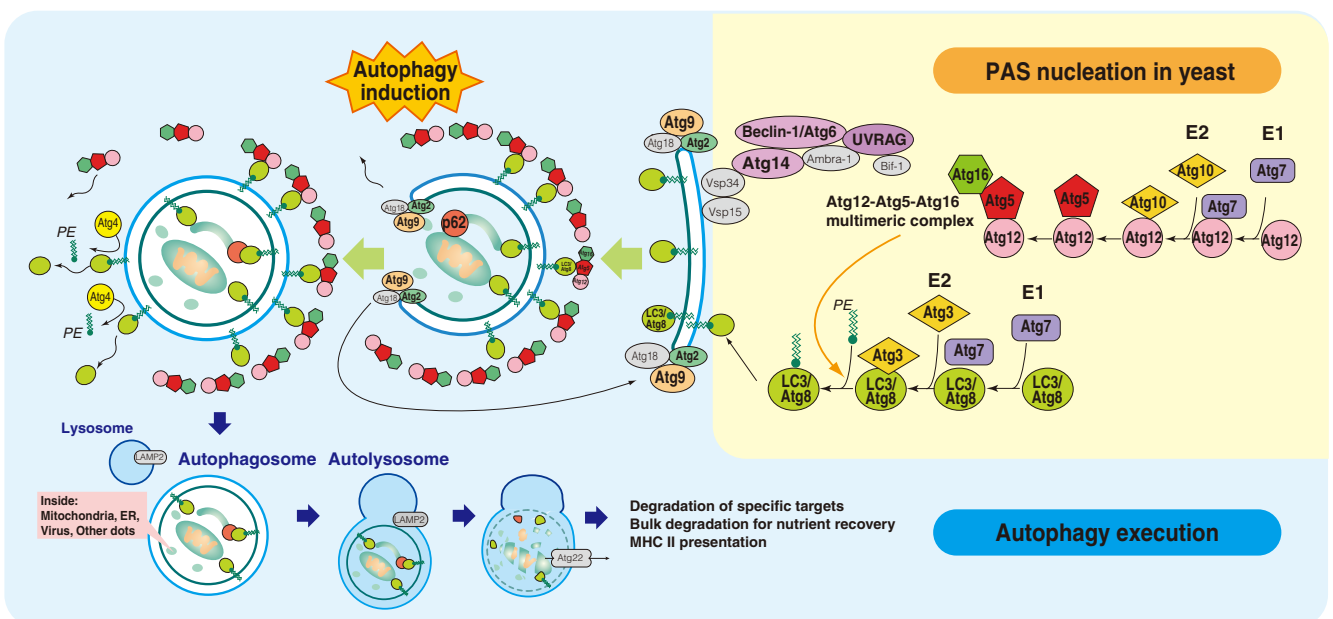


Article written by researcher

“Autophagy research: Current status and future perspectives”
 Dr. Noboru Mizushima
<https://www.mblbio.com/bio/g/product/autophagy/special-talk.html>

“p62/Sqstm1: The molecule that links autophagy to the Keap1-Nrf2 system”
 Dr. Masaaki Komatsu Dr. Yoshinobu Ichimura
<https://ruo.mbl.co.jp/bio/g/product/autophagy/special-talk/p62.html>

“Role of the autophagy regulator Rubicon in the pathogenesis of fatty liver disease”
 Dr. Satoshi Tanaka Dr. Tamotsu Yoshimori
<https://ruo.mbl.co.jp/bio/g/product/autophagy/special-talk/rubicon.html>



Autophagy	Autophagy Flux Assay Kit	Mitophagy	LC3 antibodies	p62 antibodies	Phospho-p62 antibodies	Atg antibody series	Antibodies for autophagy-related proteins	Antibody sampler set	FAOs
-----------	--------------------------	-----------	----------------	----------------	------------------------	---------------------	---	----------------------	------

Autophagy Watch for Autophagy Flux Assay and LC3 Immunostaining

The Simple "Autophagy Flux Assay" Kit

Autophagy Watch contains a set of anti-LC3 antibodies and autophagy inhibitors. The Western blotting (WB)-based Autophagy Flux Assay can detect the induction of autophagy.



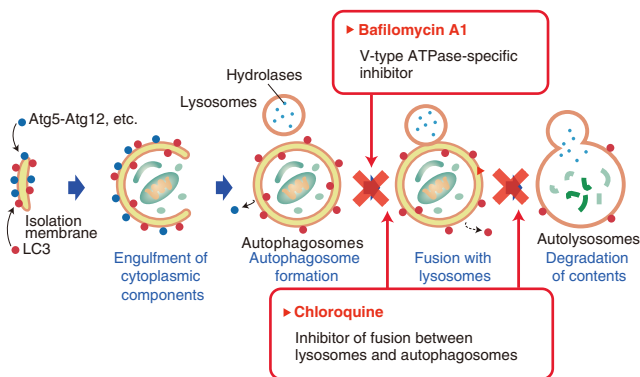
- ▶ Anti-LC3 Antibodies (2)
- ▶ Antibody for Loading Control (α -Tubulin)
- ▶ Positive Control protein for WB
- ▶ Autophagy Inhibitors (2)
- ▶ Cell Lysis Buffer

Features

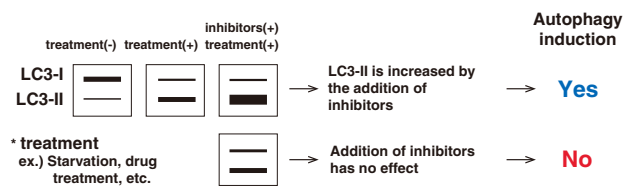
- ⊙ The antibody for WB is conjugated to HRP, and does not require a secondary antibody. Advantages include a shorter assay time and the absence of nonspecific signal from the secondary antibody.
- ⊙ The lysosomal inhibitors chloroquine and bafilomycin A1 are included as autophagy inhibitors. Simply dilute 1,000-fold with culture medium.
- ⊙ An antibody for cell staining is also included in this kit. Autophagosomes in the cell can be visualized and monitored by staining with a fluorescence-labeled secondary antibody.

What Is the Autophagy Flux Assay?

LC3-II is localized to the isolation membrane (phagophore) and the autophagosomal membrane. Induction of autophagy cannot be determined by simply detecting an increase in LC3-II band intensity on Western blotting. The Autophagy Flux Assay compares samples treated with or without lysosomal inhibitors to allow assessment of the induction of autophagy.

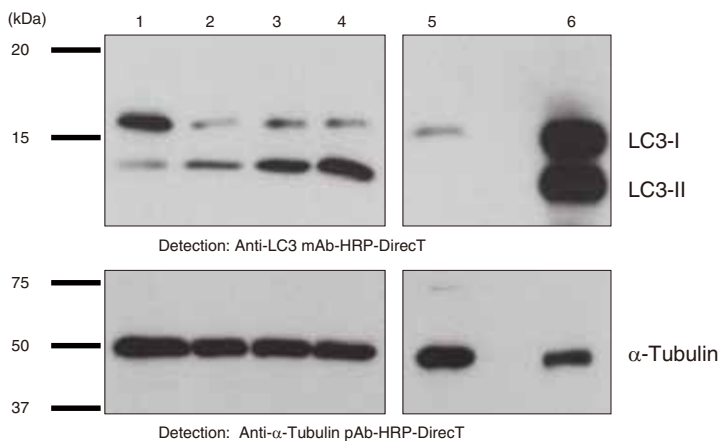


How to interpret the LC3 bands on WB



(Source) Mizushima, N. and Yoshimori, T. How to Interpret LC3 Immunoblotting. *Autophagy* 3, 542-545 (2007) (PMID:17611390)

Detection of autophagy induction using Autophagy Watch: WB

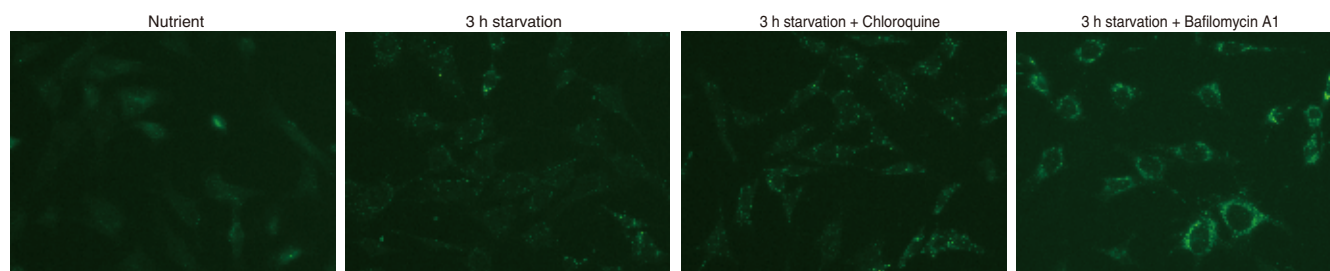


Lane 1: 10% FCS/RPMI-1640	Lane 4: HBSS + Bafilomycin A1
Lane 2: HBSS	Lane 5: *MEF Atg5 ^{-/-}
Lane 3: HBSS + Chloroquine	Lane 6: Positive control (PM036-PNY)

LC3-II is increased in cells under starvation conditions, compared with cells under control (nutrient) conditions (Lanes 1, 2). When starved cells were treated with the lysosomal inhibitor chloroquine or bafilomycin A1, LC3-II band intensity is further increased (Lanes 3, 4). This increase indicates an accumulation of autophagosomes caused by the inhibition of their degradation. Induction of autophagy in starved cells can be confirmed by comparing these results.

*MEF Atg5^{-/-} cells were kindly provided by Dr. Noboru Mizushima (The University of Tokyo).

Detection of autophagy induction using *Autophagy Watch*: IC



Microscope: BZ-9000 Generation II (Keyence), Cell : MEF

Autophagosomes can be seen as punctate staining inside the cells starved in HBSS (Hank's Balanced Salt Solution). The addition of the inhibitors increases the number of autophagosomes.

Products

Code No.	Product Name
8486	Autophagy Watch

Kit Components

Product Name	Clone	Isotype	Application	Size	Species Cross-Reactivity
Anti-LC3 mAb-HRP-Direct	8E10	Mo IgG2 α k	WB	100 μ L	Hu, Mo, Rat, Hm
Anti-LC3 mAb	4E12	Mo IgG1 κ	WB(weak), IC, IP, FCM, Immuno-EM	50 μ L, 2 mg/mL	Hu, Mo, Rat, Hm
Anti- α -Tubulin pAb-HRP-Direct	Polyclonal	Rab IgG(aff.)	WB Positive Control	100 μ L	Hu, Mo, Rat, Hm, Chi
Positive control for anti-LC3 antibody				100 μ L (20 tests)	
Chloroquine solution (x1000)				100 μ L	
Bafilomycin A1 solution (x1000)				100 μ L	
Cell lysis buffer (x5)				1 mL x2	

Autophagy Watch FAQ

Q1. What can I do to induce starvation?

→ In NRK cells, starvation can be induced by changing the media to Hank's Balanced Salt Solution (serum-free) and incubating for 2 – 4 hours. Serum-free DMEM (Dulbecco's modified Eagle's medium) can be used, but the induction is weaker because DMEM contains amino acids.

Q2. Tell me more about the inhibitors.

→ The well-known anti-malarial drug chloroquine has long been used as an inhibitor of lysosomal activity. Today, its efficacy as an anti-cancer drug is being studied. Bafilomycin A1 is a specific autophagy inhibitor used by many autophagy researchers. Another commonly used inhibitor wortmannin (not included in this kit) blocks autophagy at an earlier stage.

Q3. Two anti-LC3 antibodies are included. Are they used for different purposes?

→ Anti-LC3 antibody, clone 8E10 is conjugated to HRP and suitable for WB. For other applications, such as IC and IP, use clone 4E12.

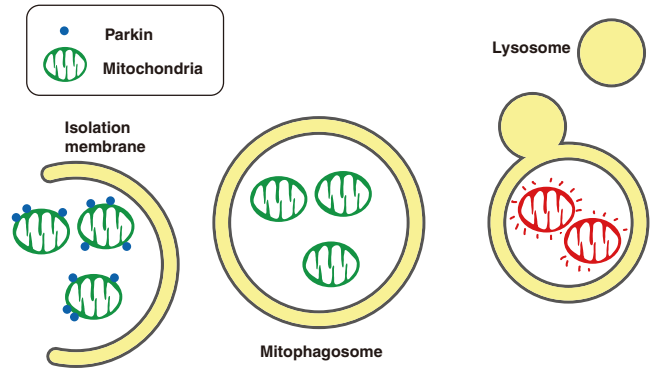
Q4. Can you tell me the details of the experimental protocol for LC3 detection by Western blotting?

→ Please refer to the FAQ on page 21 – 22.

Autophagy
Autophagy Flux Assay Kit
Mitophagy
LC3 antibodies
p62 antibodies
Phospho-p62 antibodies
p62 and phospho-p62 ELISA Kit
Antibodies for phospho-related proteins
Atg antibody series
Antibodies for autophagy-related proteins
Antibody sampler set
FAQs

What is mitophagy?

Mitophagy is a type of autophagy that selectively degrades mitochondria, and is involved in the turnover of damaged mitochondria. This process is thought to defend the body from diseases resulting from mitochondrial dysfunction. The Parkinson's disease gene product, Parkin (ubiquitin ligase), plays a critical role in the induction of mitophagy. Parkin is recruited to the outer membrane of damaged and depolarized mitochondria. Ubiquitin is subsequently added to the outer membrane of damaged mitochondria by the ubiquitin ligase activity of Parkin. Mitophagy is induced through the recognition of the ubiquitin modification.



Plasmid vector for monitoring mitophagy activity, pMitophagy Keima-Red mPark2

This vector is designed for labeling mitochondria with the fluorescent protein mKeima-red (monomeric with an emission maximum at 620 nm). mKeima-Red is tagged with a mitochondrial localization signal, and is co-expressed in the cells with Parkin (ubiquitin ligase), which plays a critical role in the induction of mitophagy. Mitophagy can be detected and visualized due to the changes in the excitation spectrum of mKeima-Red before and after induction of mitophagy by drug treatment.

Features

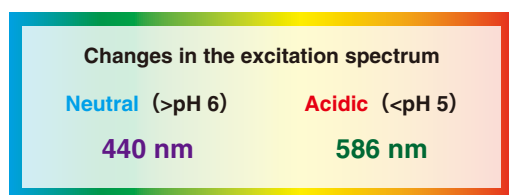
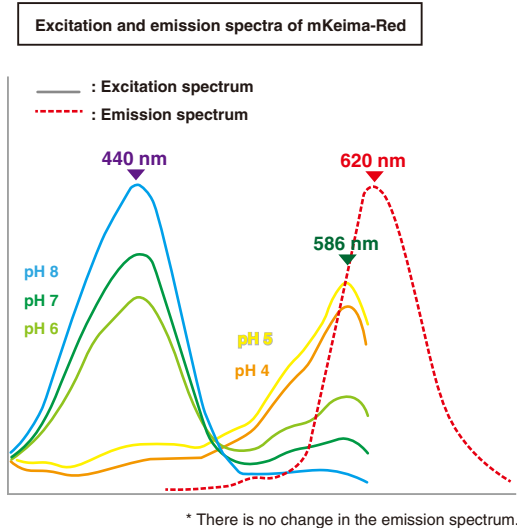
© mKeima-Red (tagged with a mitochondrial localization signal) and Parkin are co-expressed from a single construct.



* MT-mKeima-Red expression vectors without Parkin are also available.

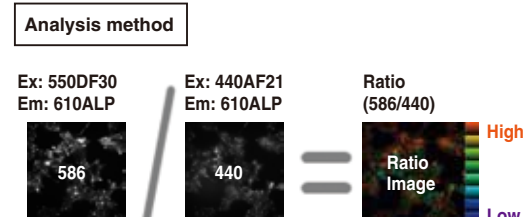
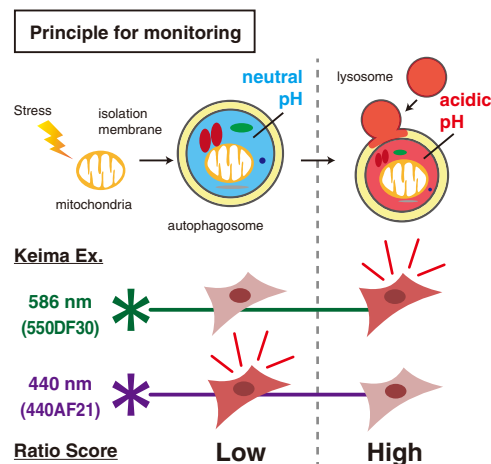
© Features of Keima-Red: pH biosensor

mKeima-Red is a fluorescent protein with an emission maximum at 620 nm. The excitation spectrum changes depending on the pH of the environment.

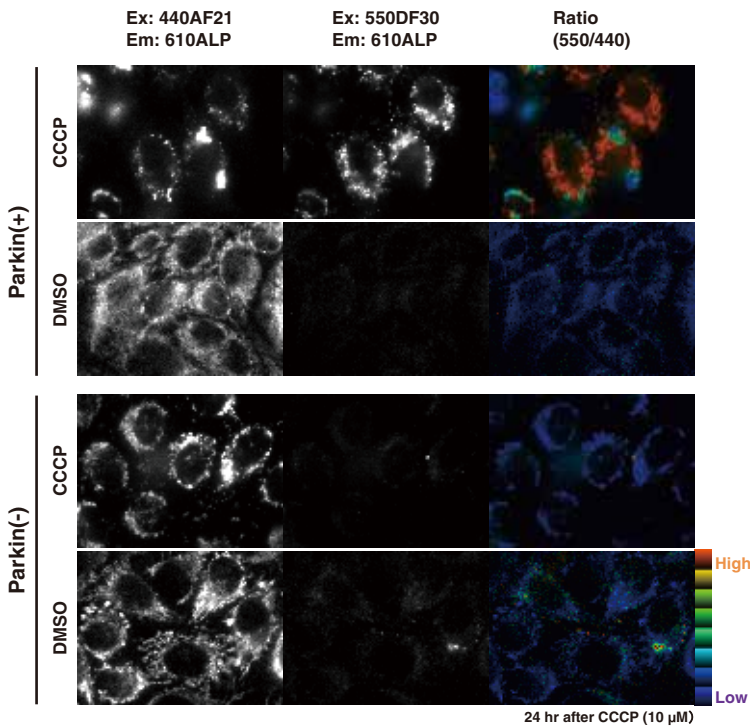


© The principle for monitoring and the analysis method

Images are taken with excitation wavelengths of 440 and 586 nm (the excitation maxima in a neutral and acidic environment, respectively) and processed for ratio imaging (586 nm/440 nm). The high ratio is shown in red, and the low ratio is shown in blue. Keima has a low ratio score (colored in blue) in a neutral environment and has a high ratio score (colored in red) in an acidic environment. The change from blue to red indicates the induction of mitophagy.

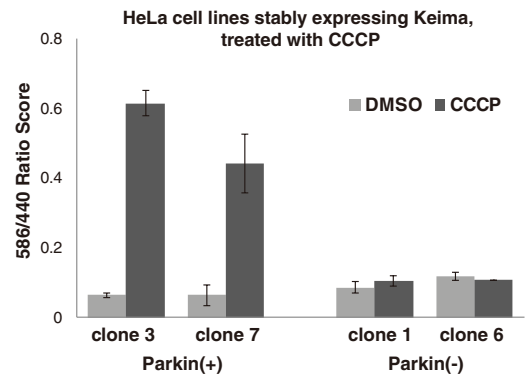


Ratio imaging



The Ratio (586/440) panels show the ratio of fluorescence intensities observed with excitation filters 550DF30 and 440AF21. A higher ratio indicates greater activation of mitophagy.

Quantitative analysis



CCCP: M.P. inducer (membrane depolarizer)
DMSO: Control

Stable cell lines (HeLa cells)

Parkin(+): Transfected with MT-mKeima-Red-IRES-Park2
Parkin(-): Transfected with MT-mKeima-Red

Assay method

Cells were imaged 24 hours after treatment with CCCP (10 μM) or DMSO.

Filter settings

440 nm (Ex: 440AF21, Em: 610ALP, DM: 590DRLP)
586 nm (Ex: 550DF30, Em: 610ALP, DM: 590DRLP)

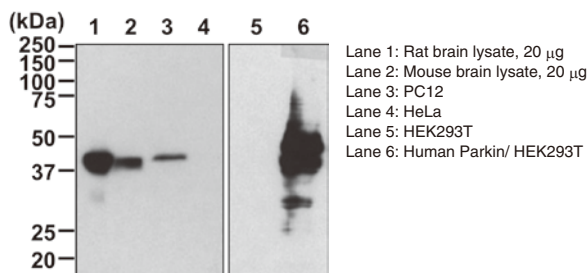
Product list

Code No.	Product name	Size
AM-V0259M	pMitophagy Keima-Red mPark2 (Kan)	20 μg
AM-V0259HM	pMitophagy Keima-Red mPark2 (Hyg)	20 μg
AM-V0251M	CoralHue™ Mitochondria-targeted mKeima-Red (pMT-mKeima-Red)	20 μg
AM-V0251HM	CoralHue™ Mitochondria-targeted monomeric Keima-Red (Hyg)	20 μg

Anti-Parkin mAb

Code No.	Product name	Clone	Isotype	Size	Application	Species cross-reactivity
M230-3	Anti-Parkin mAb	Par6	Mouse IgG2ak	100 μg/100 μL	WB	Hu, Mo, Rat

Western blotting



Recommended for WB



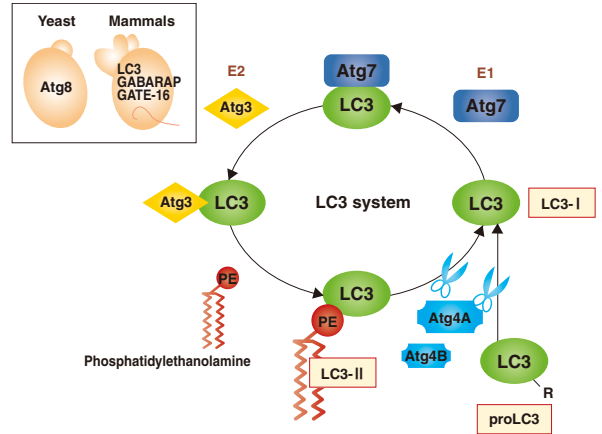
Autophagy	Autophagy Flux Assay Kit	Mitophagy	LC3 antibodies	p62 antibodies	Phospho-p62 antibodies	p62 and phospho-p62 ELISA Kit	Antibodies for phospho-p62-related proteins	Atg antibody series	Antibody related proteins	Antibody sampler set	FAOs
-----------	--------------------------	-----------	----------------	----------------	------------------------	-------------------------------	---	---------------------	---------------------------	----------------------	------

LC3 antibodies

The gold standard for autophagy research

The three proteins, LC3, GABARAP (GABAA receptor-associated protein), and GATE-16 (Golgi-associated ATPase enhancer), are mammalian homologues of yeast Atg8.

Among them, LC3 has been studied most extensively and frequently used as an autophagy marker in mammals. Newly translated LC3 (proLC3) is immediately processed at the C-terminus by Atg4B or Atg4A, forming LC3-I. Upon induction of autophagy, LC3-I is sequentially transferred to E1 and E2, and conjugated to the substrate, PE (phosphatidylethanolamine). The resulting PE-conjugated LC3 is called LC3-II. Although LC3-II has a higher molecular weight than LC3-I, the mobility of LC3-II is greater than LC3-I on SDS-PAGE, due to higher hydrophobicity. GABARAP and GATE-16 are also conjugated to PE in a similar process.



Code No.	Clone	Host species	Application						Conjugation
			WB	IP	IC	IH	FCM	Immuno-EM	
PM036	Polyclonal	Rabbit	★★★	★★★	★★★	★★★	★★★	★*	
M186-3	8E10	Mouse	★★★★	★*					
M186-7	8E10	Mouse	★★★★						HRP
M152-3	4E12	Mouse		★★★	★★★★	★*	★★★	★★	
PD014	Polyclonal	Rabbit	★★★		★*	★*			

*: reported in articles

Anti-LC3 pAb

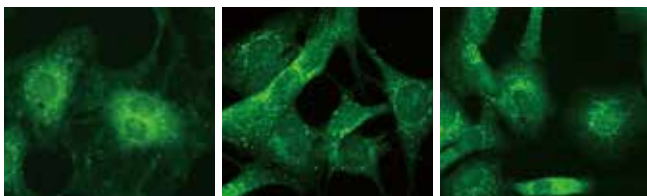
Code No.	Clone	Isotype	Size
PM036MS	Polyclonal	Rab IgG	20 µL
PM036	Polyclonal	Rab IgG	100 µL

© Suitable for various applications and has been used in a large number of studies!

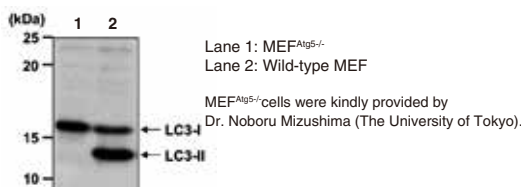
[Immunogen] Recombinant human LC3 (MAP1LC3B: 1–120 a.a.)
 [Species cross-reactivity] Hu, Mo, Rat, Hm, Zeb*
 [Form] PBS/50% glycerol, pH 7.2
 [Application] WB: 1:1,000
 IP: 2 µL/300 µL of cell extract from 1x10⁷ cells
 IC: 1:500-1:1,000
 IH: 1:1,000-1:2,000 (Heat treatment is necessary for paraffin embedded sections.)
 FCM: 1:200
 [Note] This antibody reacts with LC3 (MAP1LC3A, B, C).
 This antibody does not react with GATE-16 or GABARAP.

<References>
 1) Saitoh, T., *et al.*, Nature 456, 264-268 (2008) [WB]
 2) Jing, L., *et al.*, J. Biol. Chem. 291, 13175-13193 (2016) [WB, IC]

Immunocytochemistry



Western blotting



Anti-LC3 mAb

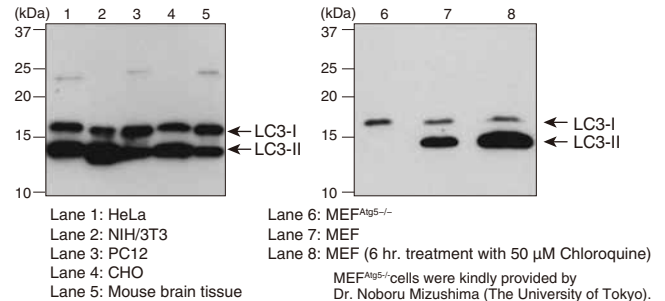
Code No.	Clone	Isotype	Size
M186-3MS	8E10	Mo IgG2aκ	20 µg/20 µL
M186-3	8E10	Mo IgG2aκ	100 µg/100 µL

© The best choice for WB.

[Immunogen] Recombinant human LC3 (MAP1LC3B: 1–120 a.a.)
 [Species cross-reactivity] Hu, Mo, Rat, Hm
 [Form] 1 mg/mL in PBS/50% glycerol, pH 7.2
 [Application] WB: 1 µg/mL
 IP*: reported in articles
 [Note] This antibody reacts with LC3B.
 This antibody does not react with LC3A, LC3C, GATE-16, or GABARAP.

<References>
 1) Margariti, A., *et al.*, J. Biol. Chem. 288, 859-872 (2013) [WB]
 2) Maejima, Y., *et al.*, Nat. Med. 19, 1478-1488 (2013) [WB]
 3) Meng, XH., *et al.*, Int J Biol Sci. 13(8), 985-995 (2017) [IP]

Western blotting



Anti-LC3 mAb-HRP-Direct

HRP-conjugated

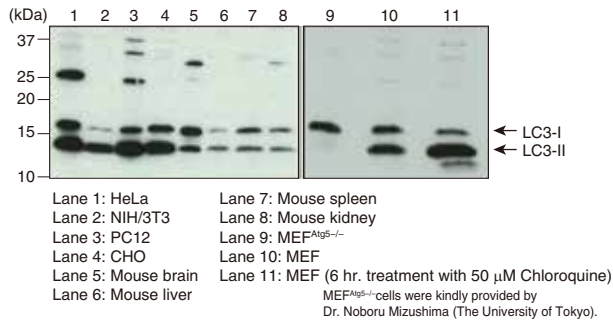
Code No.	Clone	Isotype	Size
M186-7MS	8E10	Mo IgG2a κ	10 μ L
M186-7	8E10	Mo IgG2a κ	50 μ L

© This antibody does not require a secondary antibody.

[Immunogen] Recombinant human LC3 (MAP1LC3B: 1-120 a.a.)
 [Species cross-reactivity] Hu, Mo, Rat, Hm
 [Form] PBS/Preservative/Stabilizer
 [Application] WB: 1:1,000
 [Note] This antibody reacts with LC3B.
 This antibody does not cross-react with LC3A, LC3C, GATE-16, and GABARAP.

- <References>
 1) Jia, W., and He, Y. W., J. Immunol. 186, 5313-5322 (2011)
 2) Tabata, K., *et al.*, Mol. Biol. Cell 21, 4162-4172 (2010)

■ Western blotting



Anti-LC3 mAb

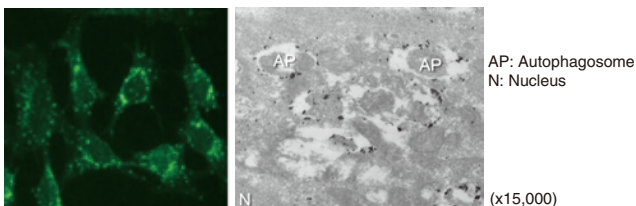
Code No.	Clone	Isotype	Size
M152-3MS	4E12	Mo IgG1 κ	40 μ g/20 μ L
M152-3	4E12	Mo IgG1 κ	200 μ g/100 μ L

© The best choice for cell staining.

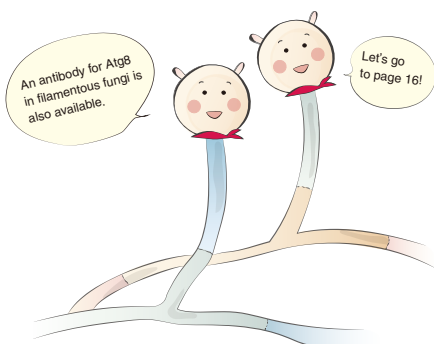
[Immunogen] Recombinant human LC3 (MAP1LC3B: 1-120 a.a.)
 [Species cross-reactivity] Hu, Mo, Rat, Hm
 [Form] 2 mg/mL in PBS/50% glycerol, pH 7.2
 [Application] IP: 5 μ g/300 μ L of cell extract from 1x10⁷ cells
 IC: 40 μ g/mL
 IH*: reported in articles
 FCM: 40 μ g/mL
 Immuno-EM: 20 μ g/mL

- Image-based FCM*: reported in articles
 [Note] This antibody reacts with LC3 (MAP1LC3A, B).
 <References>
 1) Moreau, K., *et al.*, Cell 146, 303-317 (2011) [IC]
 2) McKnight, N.C., *et al.*, EMBO J. 31, 1931-1946 (2012) [IC]

■ Immunocytochemistry ■ Immuno-EM



MEF (starved condition) MEF (starved condition)
 The immuno-EM data was kindly provided by Dr. Noboru Mizushima (The University of Tokyo).



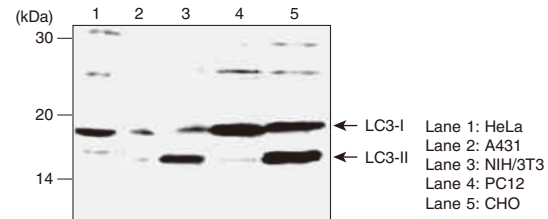
Anti-LC3 pAb

Code No.	Clone	Isotype	Size
PD014MS	Polyclonal	Rab IgG	20 μ L
PD014	Polyclonal	Rab IgG	100 μ L

[Immunogen] Recombinant rat LC3 (1-142 a.a.)
 [Species cross-reactivity] Hu, Mo, Rat, Hm
 [Form] PBS/50% glycerol, pH 7.2
 [Application] WB: 1:1,000
 IC*: reported in articles
 IH*: reported in articles

- <References>
 1) Tsuchiya, Y., *et al.*, Mol. Cell. Biol. 33, 3461-3472 (2013) [WB]
 2) Kobayashi, S., *et al.*, PNAS 112, 7027-32 (2015) [IC]

■ Western blotting



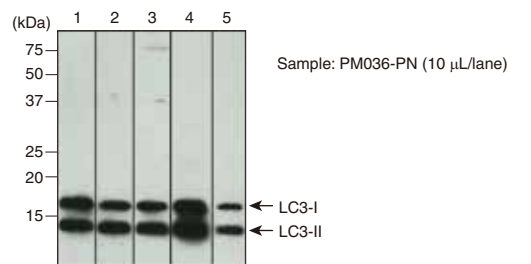
Positive control for anti-LC3 antibody

Code No.	Size
PM036-PN	100 μ L (10 tests)

© Migrates at the same level as the endogenous human LC3 in WB.

[Application] Positive control in WB with anti-LC3 antibody
 [Note] Since this product is using human LC3 without any tag, its molecular weight is the same as the endogenous LC3.
 <References>
 1) Zadra, G., *et al.*, EMBO Mol. Med. 6, 519-538 (2014) [WB]

■ Western blotting



- Lane 1: Anti-LC3 pAb (Code No. PM036), 1:1,000
 Lane 2: Anti-LC3 pAb (Code No. PD014), 1:1,000
 Lane 3: Anti-LC3 pAb (Code No. PM046), 1:1,000
 Lane 4: Anti-LC3 mAb (clone: 8E10) (Code No. M186-3), 1 μ g/mL
 Lane 5: Anti-LC3 mAb (clone: 4E12) (Code No. M152-3), 10 μ g/mL

See page 21 - 22 for FAQ about anti-LC3 antibodies.

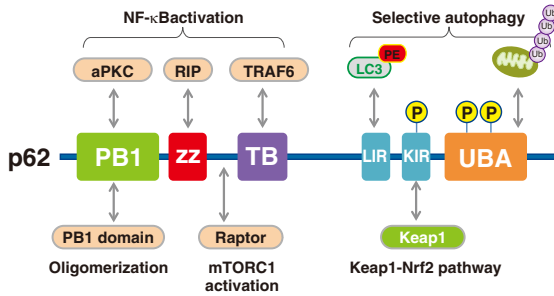
Autophagy	Autophagy/Flux Assay Kit	Mitophagy	LC3 antibodies	p62 antibodies	Phospho-p62 antibodies	p62 and phospho-p62 ELISA Kit	Antibodies for phospho-related proteins	Atg antibody series	Antibodies for autophagy-related proteins	Antibody sampler set	FAQs
-----------	--------------------------	-----------	----------------	----------------	------------------------	-------------------------------	---	---------------------	---	----------------------	------

p62 antibodies

A link between the ubiquitin-proteasome system and autophagy

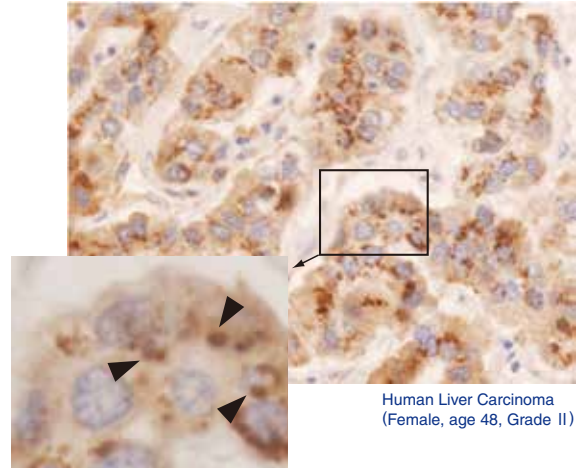
p62/SQSTM1 is a scaffolding protein that interacts with various signaling molecules such as TRAF6, RIP, and aPKC (figure below, left). p62 contains an LC3-interacting region and is believed to be a substrate for selective autophagy. In addition, p62 contains a domain that binds ubiquitin chains, and mediates the recruitment of poly ubiquitinated protein aggregates and depolarized mitochondria to the autophagic machinery (see page 11 for the details of selective autophagy). In fact, in liver- and brain-specific autophagy-deficient mice, overaccumulation of p62 occurs, and ubiquitin- and p62-positive inclusion bodies are observed (figure below, right). Importantly, ubiquitin- and p62-positive inclusion bodies are also observed in tissues of patients with neurodegenerative diseases (such as Alzheimer's disease, Parkinson's disease, and amyotrophic lateral sclerosis), alcoholic hepatitis, hepatic steatosis, and liver cancer. There is increasing interest in the involvement of impaired autophagic degradation of p62 in these diseases.

■ Domain structure of p62/SQSTM1



This illustration was made with the supervision of Dr. Masaaki Komatsu and Dr. Yoshinobu Ichimura (Niigata University).

■ Immunohistochemistry



Antibody: Anti-p62 pAb (Code No. PM045)

p62-positive inclusion bodies are observed in human liver cancer tissue.

Code No.	Clone	Immunized host	Immunogen	Species cross-reactivity	Application						Conjugation
					WB	IP	IC	IH	FCM	Immuno-EM	
M162-3	5F2	Mouse	Human p62 (120-440 a.a.)	Hu	★★★	★★★	★★★	★★★	★★		
M162-A48	5F2	Mouse	Human p62 (120-440 a.a.)	Hu			★★★★		★★★		Alexa 488
M162-A59	5F2	Mouse	Human p62 (120-440 a.a.)	Hu			★★★				Alexa 594
M162-A64	5F2	Mouse	Human p62 (120-440 a.a.)	Hu			★★★		★★★		Alexa 647
PM045	Polyclonal	Rabbit	Human p62 (120-440 a.a.)	Hu, Mo, Rat, Hm	★★★	★★★	★★★	★★★		★*	
PM066 C-terminal	Polyclonal	Guinea Pig	Human p62, C-terminal region	Hu, Mo, Rat, Hm	★★★★	★★★	★★★	★★★★			

Anti-p62 (SQSTM1) (Human) mAb

Code No.	Clone	Isotype	Size
M162-3MS	5F2	Mo IgG1κ	20 µg/20 µL
M162-3	5F2	Mo IgG1κ	100 µg/100 µL

[Immunogen] Recombinant human p62 (120-440 a.a.)

[Species cross-reactivity] Hu, Mo(-), Rat(-), Hm(-)

[Form] 1 mg/mL in PBS/50% glycerol, pH 7.2

[Application] WB: 1 µg/mL

IP: 2 µg/250 µL of cell extract from 2.5x10⁶ cells

IC: 5 µg/mL

IH: 2 - 10 µg/mL (Heat treatment is necessary for paraffin embedded sections.)

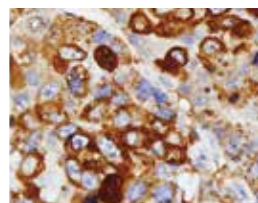
FCM: 2 µg/mL

<References>

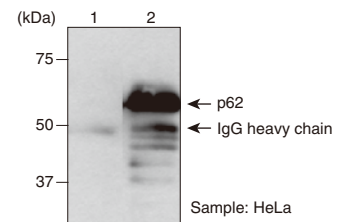
1) Janda, E., *et al.*, Autophagy 11, 1063-80 (2015) [IC]

2) Matsumoto, G., *et al.*, Mol. Cell. 44, 279-89 (2011) [WB]

■ Immunohistochemistry



■ Immunoprecipitation



Lane 1: Isotype control (Code No. M075-3)

Lane 2: Anti-p62 mAb (Code No. M162-3)

Immunoblotted with Anti-p62 pAb (Code No. PM045)

Anti-p62 (SQSTM1) (Human) mAb-Alexa Fluor® 488

Alexa Fluor® 488

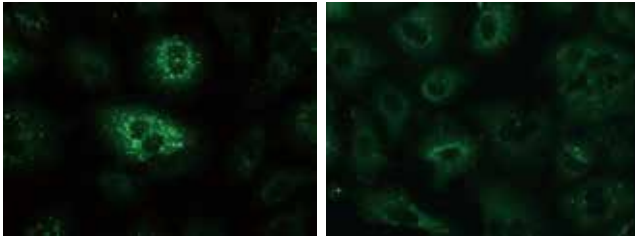
Code No.	Clone	Isotype	Size
M162-A48MS	5F2	Mo IgG1κ	20 µg/20 µL
M162-A48	5F2	Mo IgG1κ	100 µg/100 µL

[Immunogen] Recombinant human p62 (120–440 a.a.)
 [Species cross-reactivity] Hu
 [Form] 1 mg/mL in PBS/1% BSA/0.09% NaN₃
 [Application] IC: 2 µg/mL
 FCM: 1 µg/mL

<References>

- 1) Ichimura, Y., *et al.*, J. Biol. Chem. 283, 22847-22857 (2008)
- 2) Komatsu, M., *et al.*, Cell 131, 1149-1163 (2007)

■ Immunocytochemistry



A549 (starved condition)

A549 (nutrient-rich condition)

Anti-p62 (SQSTM1) (Human) mAb-Alexa Fluor® 594

Alexa Fluor® 594

Code No.	Clone	Isotype	Size
M162-A59MS	5F2	Mo IgG1κ	20 µg/20 µL
M162-A59	5F2	Mo IgG1κ	100 µg/100 µL

[Immunogen] Recombinant human p62 (120–440 a.a.)
 [Species cross-reactivity] Hu
 [Form] 1 mg/mL in PBS/1% BSA/0.09% NaN₃
 [Application] IC: 5 µg/mL

<References>

- 1) Ichimura, Y., *et al.*, J. Biol. Chem. 283, 22847-22857 (2008)
- 2) Komatsu, M., *et al.*, Cell 131, 1149-1163 (2007)

■ Immunocytochemistry



A549 (starved condition)

A549 (nutrient-rich condition)

Anti-p62 (SQSTM1) (Human) mAb-Alexa Fluor® 647

Alexa Fluor® 647

Code No.	Clone	Isotype	Size
M162-A64	5F2	Mo IgG1κ	20 µg/20 µL
M162-A64	5F2	Mo IgG1κ	100 µg/100 µL

[Immunogen] Recombinant human p62 (120–440 a.a.)
 [Species cross-reactivity] Hu
 [Form] 1 mg/mL in PBS/1% BSA/0.09% NaN₃
 [Application] IC: 5 µg/mL
 FCM: 1 µg/mL

<References>

- 1) Ichimura, Y., *et al.*, J. Biol. Chem. 283, 22847-22857 (2008)
- 2) Komatsu, M., *et al.*, Cell 131, 1149-1163 (2007)

■ Immunocytochemistry



A549 (starved condition)

A549 (nutrient-rich condition)

Anti-p62 (SQSTM1) pAb

Code No.	Clone	Isotype	Size
PM045MS	Polyclonal	Rab Ig (aff.)	20 µL
PM045	Polyclonal	Rab Ig (aff.)	100 µL

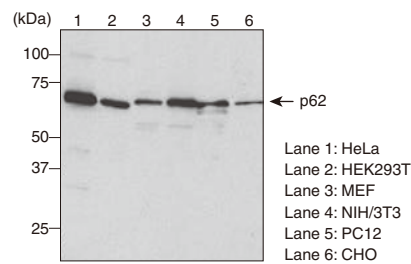
◎ Suitable for various applications and has been used in a large number of studies!

[Immunogen] Recombinant human p62 (120–440 a.a.)
 [Species cross-reactivity] Hu, Mo, Rat, Hm, Zeb*
 [Form] PBS/50% glycerol, pH 7.2
 [Application] WB: 1:1,000
 IP: 2 µL/300 µL of cell extract from 1x10⁷ cells
 IC: 1:500
 IH: 1:1,000 (Heat treatment is necessary for paraffin embedded sections.)

<References>

- 1) Hasegawa J., *et al.*, EMBO J. 35, 1853-1867 (2016) [WB]
- 2) Chen, H., *et al.*, J. Cell Biol. 211, 795-805 (2015) [IH]
- 3) Takasaka, N., *et al.*, J. Immunol. 192, 958-968 (2014) [WB]

■ Western blotting



Anti-p62 C-terminal pAb

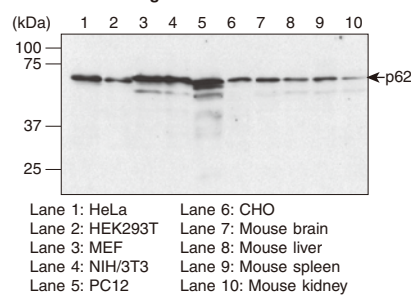
Code No.	Clone	Isotype	Size
PM066MS	Polyclonal	Guinea Pig Ig (aff.)	20 µL
PM066	Polyclonal	Guinea Pig Ig (aff.)	100 µL

[Immunogen] Human p62 C-terminal region (synthetic peptide)
 [Species cross-reactivity] Hu, Mo, Rat, Hm
 [Form] PBS/50% glycerol, pH 7.2
 [Application] WB: 1:1,000
 IP: 5 µL/300 µL of cell extract from 3x10⁸ cells
 IC: 1:500
 IH: 1:100

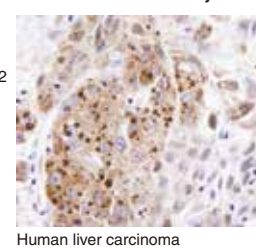
<References>

- 1) Komatsu, M., *et al.*, Cell 131, 1149-1163 (2007)
- 2) Moscat, J., *et al.*, Mol. Cell 23, 631-640 (2006)

■ Western blotting



■ Immunohistochemistry



Human liver carcinoma

Autophagy
 Autophagy Flux Assay Kit
 Mitophagy
 LC3 antibodies
 p62 antibodies
 Phospho-p62 antibodies
 p62 and phospho-p62 ELISA Kit
 Antibodies for phospho-p62-related proteins
 Atg antibody series
 Antibodies for autophagy-related proteins
 Antibody sampler set
 FACS

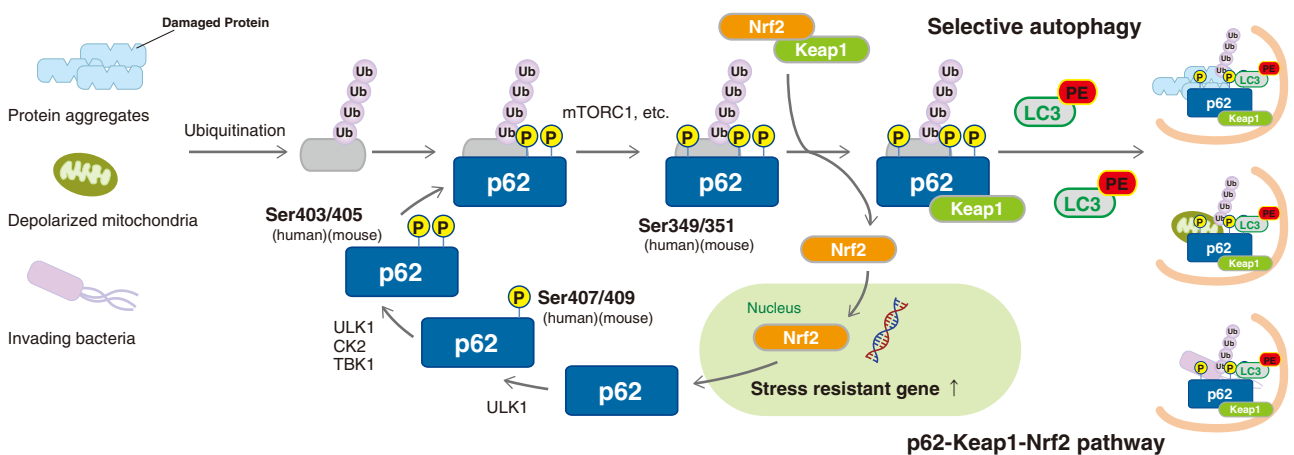
Phospho-p62 antibodies

Hot topic in research on neurodegenerative disease and cancer

p62 contains multiple phosphorylation sites. Sequential phosphorylation of these sites regulates biological defense mechanisms such as selective autophagy.

The phosphorylation of Ser407 (human)/Ser409 (mouse) precedes the phosphorylation of Ser403 (human)/Ser405 (mouse) in p62, which increases its affinity for poly ubiquitin chains. Consequently, ubiquitinated abnormal protein aggregates, depolarized mitochondria, and invading intracellular bacteria are sequestered by phospho-p62. Further phosphorylation of Ser349 (human)/Ser351 (mouse) by mTORC1 increases the affinity of p62 for Keap1, inducing dissociation of Nrf2 from Keap1 and nuclear translocation of Nrf2 (the p62-Keap1-Nrf2 pathway). Nrf2 is a stress-response transcription factor and activates the transcription of various stress resistance genes. Nrf2 also induces p62 gene expression, forming a positive feedback loop. Phospho-p62 with bound Keap1 interacts with LC3 through the LIR (LC3-interacting region) and is degraded by the autophagy pathway. Thus, the cells under stress conditions effectively overcome their negative environment by activating two biological defense mechanisms through the phosphorylation of p62.

Impaired selective autophagy is implicated in various diseases. For example, neurons in familial parkinsonism fail to clear protein aggregates and depolarized mitochondria, resulting in neuronal damage and compromised brain function. In hepatocarcinoma cells, p62 is constitutively phosphorylated at Ser349, causing continuous activation of Nrf2. Hence, inhibitors of p62 phosphorylation and inhibitors of the interaction between phospho-p62 and Keap1 have the potential to be novel cancer therapeutics. (Reference: Saito, T., *et al.*, Nat. Commun. 7, 12030 (2016) PMID: 27345495).



This illustration was made under the supervision of Dr. Masaaki Komatsu and Dr. Yoshinobu Ichimura (Niigata University).

Anti-Phospho-p62 (SQSTM1) (Ser403) mAb

Code No.	Clone	Isotype	Size
D343-3MS	4F6	Rat IgG2aκ	20 μg/20 μL
D343-3	4F6	Rat IgG2aκ	100 μg/100 μL

[Immunogen] Human p62 (396–410 a.a.) (synthetic peptide)

[Species cross-reactivity] Hu, Mo

[Form] 1 mg/mL in PBS/50% glycerol, pH 7.2

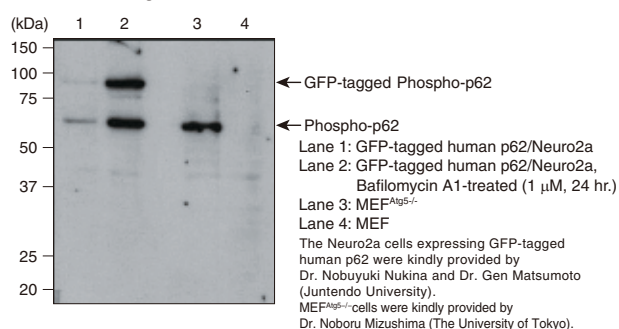
[Application] WB: 5 μg/mL

IH: 10 μg/mL

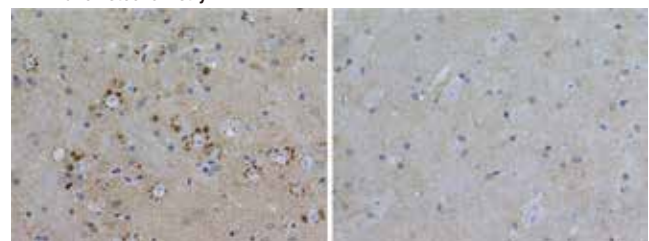
<References>

- 1) Kurosawa, M., *et al.*, Hum. Mol. Genet., 24, 1092-1105 (2015) [IH]
- 2) Matsumoto, G., *et al.*, Mol. Cell 44, 279-289 (2011) [WB, IH]

Western blotting



Immunohistochemistry



Brown: Anti-Phospho-p62 (SQSTM1) (Ser403) mAb (Code No. D343-3)
 Blue: Hematoxylin

The tissue samples were kindly provided by Dr. Nobuyuki Nukina and Dr. Gen Matsumoto (Juntendo University).

Anti-Phospho-p62 (SQSTM1) (Ser403) mAb

Code No.	Clone	Isotype	Size
D344-3MS	4C8	Rat IgG2a κ	20 μ g/20 μ L
D344-3	4C8	Rat IgG2a κ	100 μ g/100 μ L

[Immunogen] Human p62 (396–410 a.a.) (synthetic peptide)

[Species cross-reactivity] Hu, Mo

[Form] 1 mg/mL in PBS/50% glycerol, pH 7.2

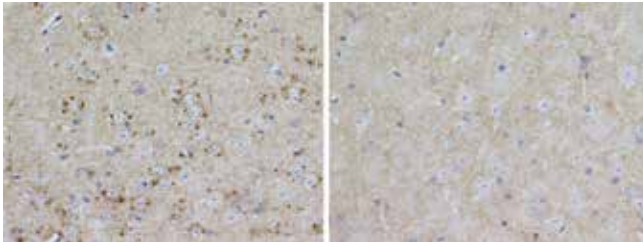
[Application] WB: 5 μ g/mL

IH: 5 μ g/mL

<References>

1) Matsumoto, G., *et al.*, Mol. Cell 44, 279-289 (2011)

■ Immunohistochemistry



Atg5 conditional knockout mouse brain Wild type mouse brain

Brown: Anti-Phospho-p62 (SQSTM1) (Ser403) mAb (Code No. D344-3)
Blue: Hematoxylin

The tissue samples were kindly provided by Dr. Nobuyuki Nukina and Dr. Gen Matsumoto (Juntendo University).

Anti-Phospho-p62 (SQSTM1) (Ser351) mAb

Code No.	Clone	Isotype	Size
M217-3MS	5D5	Mo IgG1 κ	20 μ g/20 μ L
M217-3	5D5	Mo IgG1 κ	100 μ g/100 μ L

[Immunogen] Mouse p62 (346–359 a.a.) (synthetic peptide)

[Species cross-reactivity] Hu, Mo, Rat*

[Form] 1 mg/mL in PBS/50% glycerol, pH7.2

[Application] WB: 0.5 μ g/mL

IC: 0.1 μ g/mL

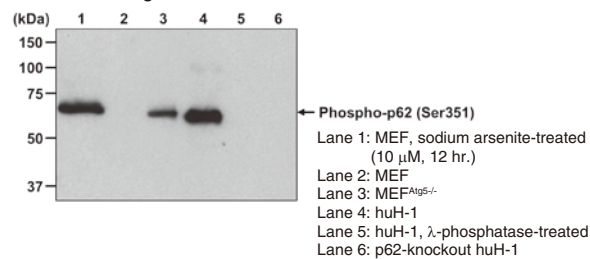
IH: 1 μ g/mL

<References>

1) Ichimura, Y., *et al.*, Mol. Cell 51, 618-31 (2013)

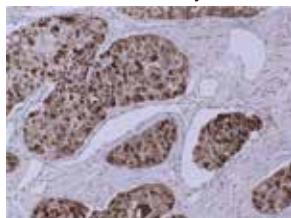
2) Kageyama, S., *et al.*, J. Biol. Chem. 289, 24944-55 (2014)

■ Western blotting



Sodium arsenite-treated MEF cells and p62-knockout huH-1 cells were kindly provided by Dr. Masaaki Komatsu and Dr. Yoshinobu Ichimura (Niigata University).
MEF Δ Atg5 $^{-/-}$ cells were kindly provided by Dr. Noboru Mizushima (The University of Tokyo).

■ Immunohistochemistry



Human liver carcinoma

Brown: Anti-Phospho-p62 (SQSTM1) (Ser351) mAb (Code No. M217-3)
Blue: Hematoxylin

Anti-Phospho-p62 (SQSTM1) (Ser351) pAb

Code No.	Clone	Isotype	Size
PM074MS	Polyclonal	Rab Ig (aff.)	20 μ L
PM074	Polyclonal	Rab Ig (aff.)	100 μ L

[Immunogen] Mouse p62 (346–359 a.a.) (synthetic peptide)

[Species cross-reactivity] Hu, Mo

[Form] PBS/50% glycerol, pH7.2

[Application] WB: 1:500

IP: 2 μ L/sample

IC: 1:500

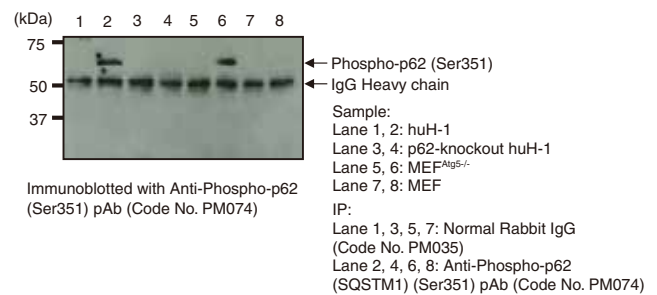
IH: 1:1,000

<References>

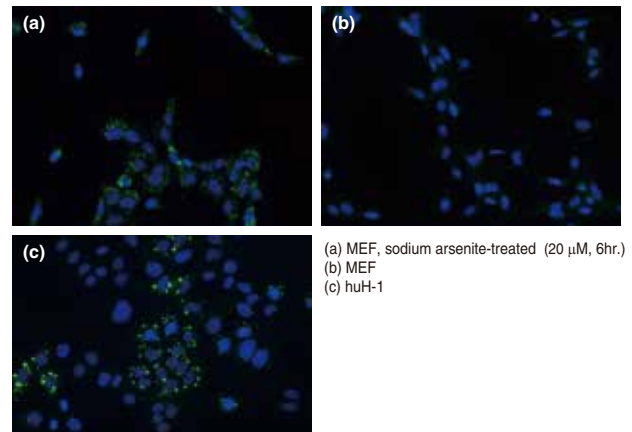
1) Kageyama, S., *et al.*, J. Biol. Chem. 289, 24944-55 (2014)

2) Ichimura, Y., *et al.*, Mol. Cell 51, 618-31 (2013)

■ Immunoprecipitation



■ Immunocytochemistry



Sodium arsenite-treated MEF cells and p62-knockout huH-1 cells were kindly provided by Dr. Masaaki Komatsu and Dr. Yoshinobu Ichimura (Niigata University).
MEF Δ Atg5 $^{-/-}$ cells were kindly provided by Dr. Noboru Mizushima (The University of Tokyo).

Autophagy	Autophagy Flux Assay Kit	Mitophagy	LC3 antibodies	p62 antibodies	Phospho-p62 antibodies	p62 and phospho-p62 ELISA Kit	Antibodies for phospho-p62-related proteins	Atg antibody series	Antibodies for autophagy-related proteins	Antibody sampler set	FAQs
-----------	--------------------------	-----------	----------------	----------------	------------------------	-------------------------------	---	---------------------	---	----------------------	------

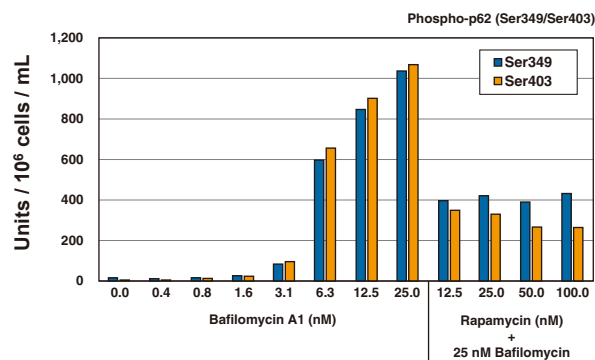
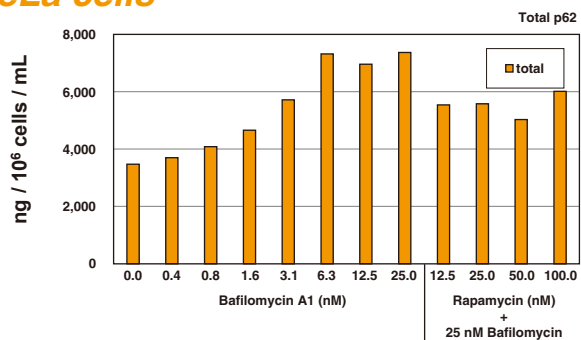
p62 and phospho-p62 ELISA Kit

Features

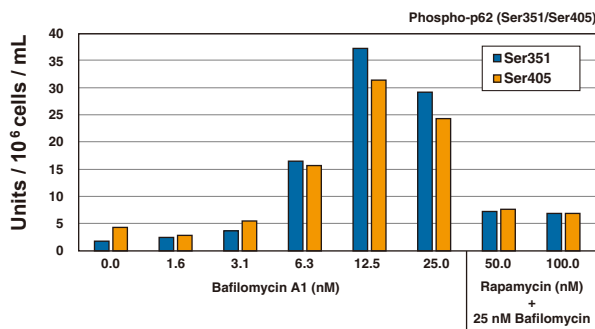
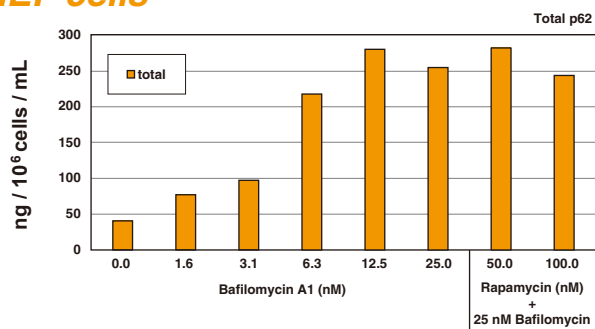
- Comes with lysis buffer. Easy to prepare cell lysate!
- Useful for drug screening!
- Human and mouse cell lysate can be used.

Example data of HeLa and MEF cells.

HeLa cells

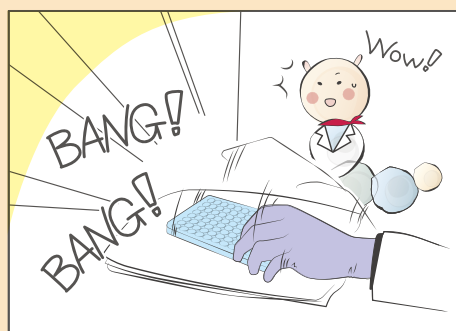


MEF cells



Product list <ELISA Kits>

Code No.	Product name	Size
CY-7055	CycLex [®] Total p62 ELISA Kit	96 Assay
CY-7056	CycLex [®] Phospho-p62 Ser349 ELISA Kit	96 Assay
CY-7057	CycLex [®] Phospho-p62 Ser403 ELISA Kit	96 Assay



The principle and method of ELISA



<https://ruo.mbl.co.jp/bio/e/support/method/elisa.html>

Antibodies for phospho-p62-related proteins

Anti-NRF2 mAb

Code No.	Clone	Isotype	Size
M200-3MS	1F2	Mo IgG1κ	20 µg/20 µL
M200-3	1F2	Mo IgG1κ	100 µg/100 µL

[Immunogen] Recombinant human NRF2 (1–605 a.a.)

[Species cross-reactivity] Hu, Mo, Rat, Hm

[Form] 1 mg/mL in PBS/50% glycerol, pH 7.2

[Application] WB: 1 µg/mL

IP: 5 µg/300 µL of cell extract from 3x10⁶ cells

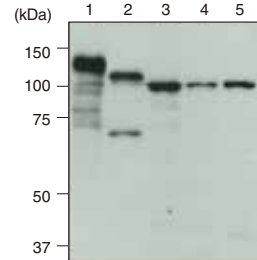
IC: 0.5 µg/mL

IH: 1 µg/mL (for paraffin embedded sections)

<References>

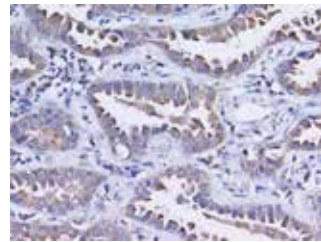
1) Nguyen, T., *et al.*, J. Biol. Chem. 284, 13291-13295 (2009)

Western blotting



Lane 1: NRF2 transfectant (HEK293T)
Lane 2: HeLa
Lane 3: PC12
Lane 4: CHO
Lane 5: NIH/3T3

Immunohistochemistry



Human lung carcinoma

Brown: Anti-NRF2 mAb (Code No. M200-3)
Blue: Hematoxylin

Anti-NRF2 pAb

Code No.	Clone	Isotype	Size
PM069MS	Polyclonal	Rab Ig (aff.)	20 µL
PM069	Polyclonal	Rab Ig (aff.)	100 µL

[Immunogen] Recombinant human NRF2 (1–605 a.a.)

[Species cross-reactivity] Hu, Mo(w), Rat(w), Hm(w)

[Form] PBS/50% glycerol, pH 7.2

[Application] WB: 1:1,000

IP: 5 µL/300 µL of cell extract from 3x10⁶ cells

IC: 1:1,000

IH: 1:1,000

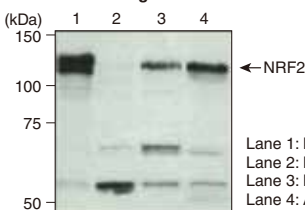
<References>

1) Taguchi, K., *et al.*, Genes Cell 16, 123-140 (2011)

2) Komatsu, M., *et al.*, Nat. Cell Biol. 12, 213-223 (2010)

3) Nguyen, T., *et al.*, J. Biol. Chem. 284, 13291-13295 (2009)

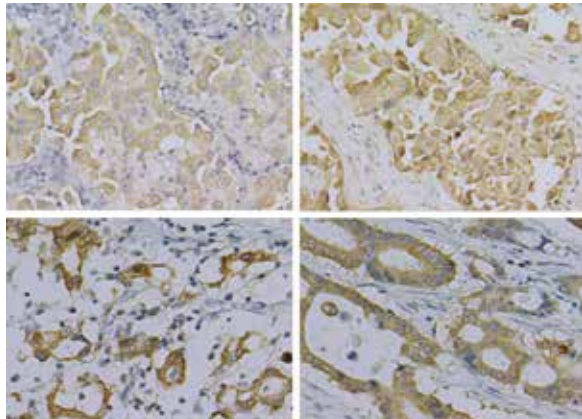
Western blotting



← NRF2

Lane 1: NRF2 transfectant (HEK293T)
Lane 2: HEK293T
Lane 3: HeLa
Lane 4: A549

Immunohistochemistry



Human cancer tissue

Upper: Lung carcinoma (different fields)
Lower: Colon carcinoma (different fields)

Anti-KEAP1 mAb

Code No.	Clone	Isotype	Size
M224-3	KP1	Mo IgG2ακ	100 µg/100 µL

◎ High affinity for KEAP1 and does not cross-react with other proteins in WB.

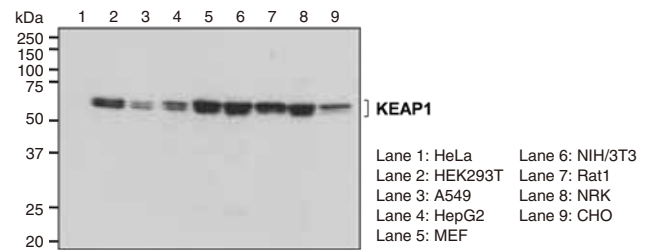
[Immunogen] Recombinant human KEAP1

[Species cross-reactivity] Hu, Mo, Rat, Hm

[Form] 1 mg/mL in PBS/50% glycerol, pH7.2

[Application] WB: 1 µg/mL

Western blotting



KEAP1

Lane 1: HeLa
Lane 2: HEK293T
Lane 3: A549
Lane 4: HepG2
Lane 5: MEF
Lane 6: NIH/3T3
Lane 7: Rat1
Lane 8: NRK
Lane 9: CHO

Anti-Ubiquitin mAb

Code No.	Clone	Isotype	Size
MK-11-3	1B3	Mo IgG1	100 µg/100 µL

[Immunogen] Bovine erythrocyte ubiquitin

[Species cross-reactivity] Hu, Mo*, Bov*

[Form] 1 mg/mL in PBS/50% glycerol, pH7.2

[Application] WB: 5 µg/mL

IC*: reported in articles

IH*: reported in articles

Immuno-EM*: reported in articles

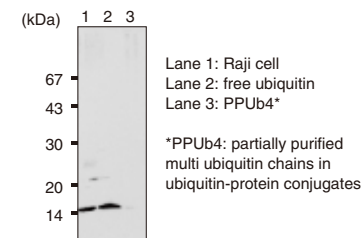
[Note] Clone 1B3 and 2C5 (Code No. MK-12-3) recognize different epitope sites each other.

<References>

1) Hara, T., *et al.*, Nature 441, 885-889 (2006) [IH]

2) Yamanaka, A., *et al.*, Mol. Biol. Cell 11, 2821-2831 (2000) [WB]

Western blotting



Lane 1: Raji cell
Lane 2: free ubiquitin
Lane 3: PPUb4*

*PPUb4: partially purified multi ubiquitin chains in ubiquitin-protein conjugates

Anti-Ubiquitin mAb

Code No.	Clone	Isotype	Size
MK-12-3	2C5	Mo IgG1	100 µg/100 µL

[Immunogen] Bovine erythrocyte ubiquitin

[Species cross-reactivity] Hu, Mo, Rat, Bov

[Form] 1 mg/mL in PBS/50% glycerol, pH7.2

[Application] WB: 5 µg/mL

IP*: reported in articles

IC*: reported in articles

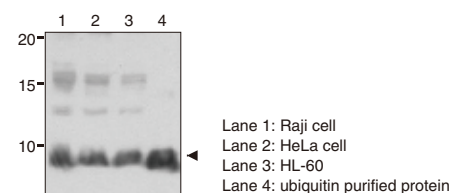
[Note] Clone 2C5 and 1B3 (Code No. MK-11-3) recognize different epitope sites each other.

<References>

1) Sutovsky, P., *et al.*, Biol. Reprod. 63, 582-90 (2000) [WB, IC]

2) Hiyama, H., *et al.*, J. Biol. Chem. 274, 28019-25 (1999) [IP]

Western blotting



Lane 1: Raji cell
Lane 2: HeLa cell
Lane 3: HL-60
Lane 4: ubiquitin purified protein

Autophagy
Autophagy/Flux Assay Kit
Mitophagy
LC3 antibodies
p62 antibodies
Phospho-p62 antibodies
p62 and phospho-p62 ELISA Kit
Antibodies for phospho-p62-related proteins
Aiy antibody series
Antibodies for autophagy-related proteins
Antibody sampler set
FAOs

Anti-Multi Ubiquitin mAb

Code No.	Clone	Isotype	Size
D058-3	FK2	Mo IgG1 κ	100 μ g/100 μ L

© This antibody recognizes both multi ubiquitin and mono ubiquitin.

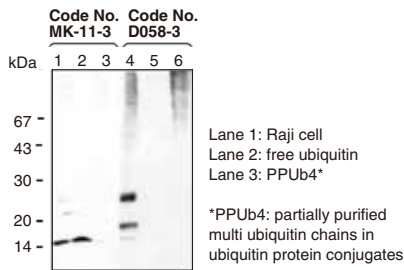
[Immunogen] Partially purified poly-ubiquitin-lysozyme
 [Species cross-reactivity] Hu, Mo*, Mky*, Yeast*, Fruit fly*
 [Form] 1 mg/mL in PBS/50% glycerol, pH7.2
 [Application] WB: 1-5 μ g/mL
 IC*: reported in articles
 IH*: reported in articles
 ELISA*: reported in articles

[Note] This antibody recognizes K29-, K48-, and K63-linked poly ubiquitinated and mono ubiquitinated proteins but not free ubiquitin.

<References>

- 1) Sin, Y., *et al.*, J. Biol. Chem. 291, 1387-1397 (2016) [WB]
- 2) Choi, U.Y., *et al.*, Exp. Mol. Med. 47, e159 (2015) [IC]

■ Western blotting



© Anti-Multi Ubiquitin mAb (clone FK2)-conjugated agarose and magnetic beads. Recommended for IP.

Code No.	Conjugate	Application	Size
D058-8	Agarose	IP	Gel: 200 μ L
D058-11	Magnetic Beads	IP	20 tests (Slurry: 1 mL)

Anti-Multi Ubiquitin mAb

Code No.	Clone	Isotype	Size
D071-3	FK1	Mo IgM	100 μ g/100 μ L

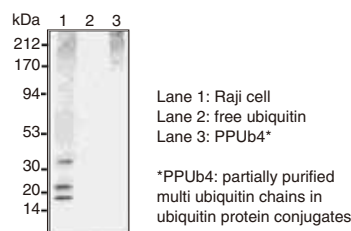
© This antibody is specific for multi ubiquitin.

[Immunogen] Partially purified poly-ubiquitin-lysozyme
 [Species cross-reactivity] Hu, Mo*
 [Form] 1 mg/mL in PBS/50% glycerol, pH7.2
 [Application] WB: 1-5 μ g/mL
 [Note] This antibody recognizes K29-, K48-, and K63-linked poly ubiquitinated proteins but not mono ubiquitinated proteins or free ubiquitin.

<References>

- 1) Zhou, L., and Yang, H., PLoS One 6, e23936 (2011) [WB]
- 2) Ledda, F., *et al.*, J. Neurosci. 28, 39-49 (2008) [WB]

■ Western blotting



Atg antibody series

Anti-Atg2A pAb

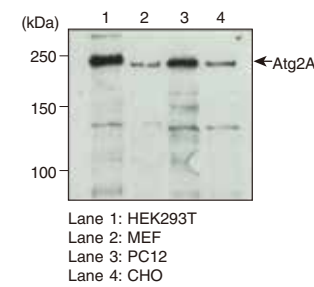
Code No.	Clone	Isotype	Size
PD041MS	Polyclonal	Rab Ig (aff.)	20 μ L
PD041	Polyclonal	Rab Ig (aff.)	100 μ L

[Immunogen] Recombinant human Atg2A (700-1,400 a.a.)
 [Species cross-reactivity] Hu, Mo, Rat, Hm
 [Form] PBS/50% glycerol, pH 7.2
 [Application] WB: 1:1,000
 IP: 5 μ L/300 μ L of cell extract from 3x10⁶ cells
 IC: 1:400

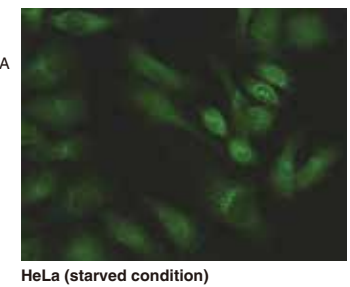
<References>

- 1) Velikkakath, A. K., *et al.*, Mol. Biol. Cell 23, 896-909 (2012)

■ Western blotting



■ Immunocytochemistry



Anti-Atg3 mAb

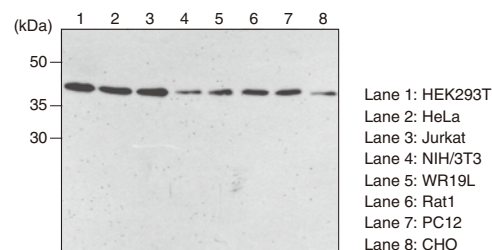
Code No.	Clone	Isotype	Size
M133-3MS	3E8	Mo IgG2b κ	20 μ g/20 μ L
M133-3	3E8	Mo IgG2b κ	100 μ g/100 μ L

[Immunogen] Recombinant human Atg3
 [Species cross-reactivity] Hu, Mo, Rat, Hm
 [Form] 1 mg/mL in PBS/50% glycerol, pH 7.2
 [Application] WB: 1 μ g/mL
 IP: 2.5 μ g/300 μ L of cell extract from 3x10⁶ cells
 IC: 0.5 μ g/mL

<References>

- 1) Metlagel, Z., *et al.*, PNAS 110, 18844-18849 (2013) [WB]

■ Western blotting



Anti-Atg4B mAb

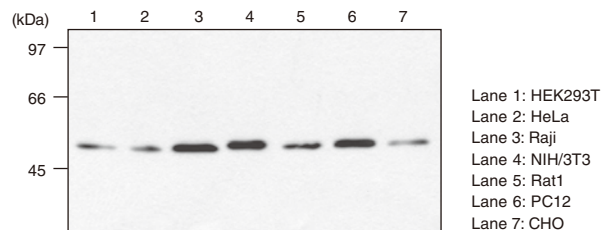
Code No.	Clone	Isotype	Size
M134-3MS	9H5	Mo IgG1	20 μ g/20 μ L
M134-3	9H5	Mo IgG1	100 μ g/100 μ L

[Immunogen] Recombinant human Atg4B (1-393 a.a.)
 [Species cross-reactivity] Hu, Mo, Rat, Hm
 [Form] 1 mg/mL in PBS/50% glycerol, pH 7.2
 [Application] WB: 1 μ g/mL

<References>

- 1) Maejima, Y., *et al.*, Nat. Med. 19, 1478-88 (2013) [WB]
- 2) Kang, Y.A., *et al.*, Mol. Cell. Biol. 32, 226-239 (2012) [WB]

■ Western blotting



Anti-Atg5 mAb

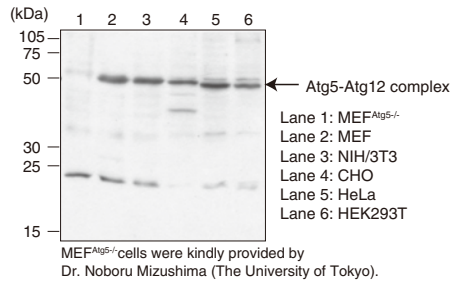
Code No.	Clone	Isotype	Size
M153-3MS	4D3	Mo IgG1κ	20 μg/20 μL
M153-3	4D3	Mo IgG1κ	100 μg/100 μL

[Immunogen] Recombinant human Atg5 (1–275 a.a.)
 [Species cross-reactivity] Hu, Mo, Rat(-), Hm
 [Form] 1 mg/mL in PBS/50% glycerol, pH 7.2
 [Application] WB: 2–5 μg/mL
 [Note] This antibody reacts with Atg5-Atg12 complex (55 kDa).

<References>

- 1) Liu, Y., *et al.*, *Sci. Rep.* 6, 20453 (2016) [WB]
- 2) Katagiri, N., *et al.*, *Sci. Rep.* 5, 8903 (2015) [WB]

■ Western blotting



Anti-Atg5 pAb

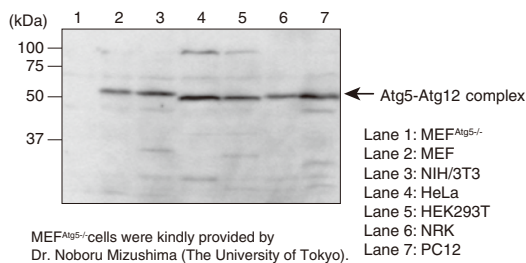
Code No.	Clone	Isotype	Size
PM050MS	Polyclonal	Rab Ig (aff.)	20 μL
PM050	Polyclonal	Rab Ig (aff.)	100 μL

[Immunogen] C-terminal region of human Atg5 (synthetic peptide)
 [Species cross-reactivity] Hu, Mo, Rat, Hm(-)
 [Form] PBS/50% glycerol, pH 7.2
 [Application] WB: 1:500
 [Note] This antibody recognizes the Atg5-Atg12 complex (55 kDa).

<References>

- 1) Maejima, Y., *et al.*, *Nat. Med.* 19, 1478-88 (2013) [WB]
- 2) Myeku, N., and Figueiredo-Pereira, M.E., *J. Biol. Chem.* 286, 22426-40 (2011) [WB]

■ Western blotting



Anti-Atg7 (Human) pAb

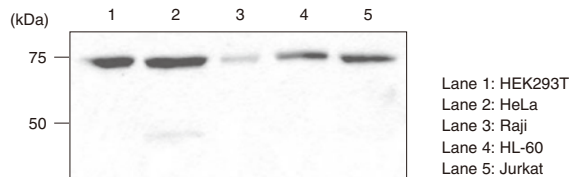
Code No.	Clone	Isotype	Size
PM039MS	Polyclonal	Rab Ig (aff.)	20 μL
PM039	Polyclonal	Rab Ig (aff.)	100 μL

[Immunogen] C-terminal region of human Atg7 (synthetic peptide)
 [Species cross-reactivity] Hu, Mo(-), Rat(-), Hm(-)
 [Form] PBS/50% glycerol, pH 7.2
 [Application] WB: 1:1,000-1:2,000
 IP: 5 μL/300 μL of cell extract from 3 x 10⁶ cells

<References>

- 1) Maejima, Y., *et al.*, *Nat. Med.* 19, 1478-88 (2013) [WB]
- 2) Fujita, K., *et al.*, *PNAS* 108, 1427-1432 (2011) [WB]

■ Western blotting

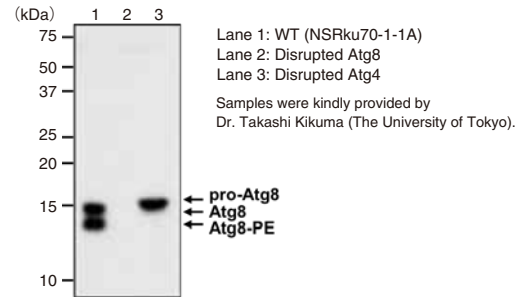


Anti-Atg8 (Filamentous fungi) pAb

Code No.	Clone	Isotype	Size
PM090	Polyclonal	Rab Ig (aff.)	100 μL

[Immunogen] Recombinant rice blast fungus MGG_01062 (Atg8) (1-116 a.a.)
 [Species cross-reactivity] Filamentous fungi
 [Form] PBS/50% glycerol, pH 7.2
 [Application] WB: 1:1,000

■ Western blotting



Anti-Atg9A pAb

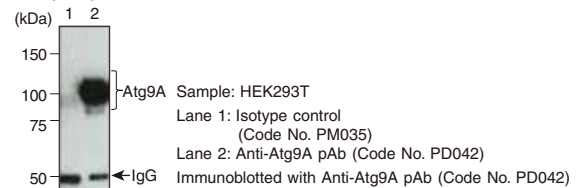
Code No.	Clone	Isotype	Size
PD042MS	Polyclonal	Rab Ig (aff.)	20 μL
PD042	Polyclonal	Rab Ig (aff.)	100 μL

[Immunogen] Recombinant mouse Atg9A (506 – 839 a.a.)
 [Species cross-reactivity] Hu, Mo, Rat, Hm
 [Form] PBS/50% glycerol, pH 7.2
 [Application] WB: 1:500
 IP: 2.5 μL/300 μL of cell extract from 3x10⁶ cells
 IC: 1:400
 IH*: reported in articles

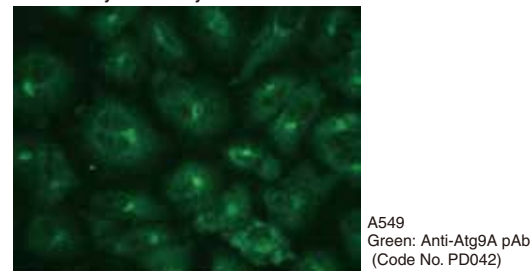
<References>

- 1) Itakura, E., *et al.*, *J. Cell Sci.* 125, 1488-1499 (2012)

■ Immunoprecipitation



■ Immunocytochemistry



Anti-Atg10 (Human) mAb

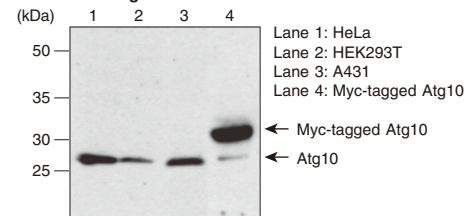
Code No.	Clone	Isotype	Size
M151-3MS	5A7	Mo IgG1κ	20 μg/20 μL
M151-3	5A7	Mo IgG1κ	100 μg/100 μL

[Immunogen] Recombinant human Atg10 (1–220 a.a.)
 [Species cross-reactivity] Hu
 [Form] 1 mg/mL in PBS/50% glycerol, pH 7.2
 [Application] WB: 2 μg/mL
 IH*: reported in articles

<References>

- 1) Jo, Y.K., *et al.*, *PLoS One* 7, e52705 (2012) [IH]
- 2) Jiang, H., *et al.*, *J. Virol.* 85, 4720-9 (2011) [WB]

■ Western blotting



Autophagy
 Autophagy Flux Assay Kit
 Mitophagy
 LC3 antibodies
 p62 antibodies
 Phospho-p62 antibodies
 p62 and phospho-p62 ELISA Kit
 Antibodies for phospho-p62-related proteins
 Atg antibody series
 Antibodies for autophagy-related proteins
 Antibody sampler set
 FACS

Anti-Atg12 (Human) mAb

Code No.	Clone	Isotype	Size
M154-3MS	6E5	Mo IgG1 κ	20 μ g/20 μ L
M154-3	6E5	Mo IgG1 κ	100 μ g/100 μ L

[Immunogen] Internal region of human Atg12 (synthetic peptide)

[Species cross-reactivity] Hu, Mo(-), Rat(-), Hm(-)

[Form] 1 mg/mL in PBS/50% glycerol, pH 7.2

[Application] WB: 1 μ g/mL

IP: 5 μ g/250 μ L of cell extract from 1×10^7 cells

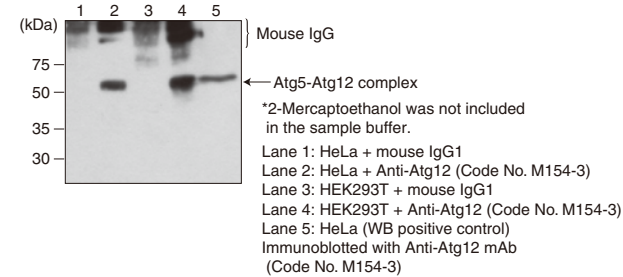
IC: 10 μ g/mL

[Note] This antibody reacts with human Atg5-Atg12 complex (55 kDa). Because almost all Atg12 exist in the form of Atg5-Atg12 complex, it is difficult to detect the monomeric Atg12.

<References>

- 1) Mizushima, N., *et al.*, J. Cell Sci. 116, 1679-1688 (2003)
- 2) Mizushima, N., *et al.*, FEBS Lett. 532, 450-454 (2002)

■ Immunoprecipitation



Anti-Atg13 mAb

Code No.	Clone	Isotype	Size
M183-3MS	5G4	Mo IgG2a κ	20 μ g/20 μ L
M183-3	5G4	Mo IgG2a κ	100 μ g/100 μ L

[Immunogen] Recombinant human Atg13

[Species cross-reactivity] Hu, Mo, Rat, Hm

[Form] 1 mg/mL in PBS/50% glycerol, pH 7.2

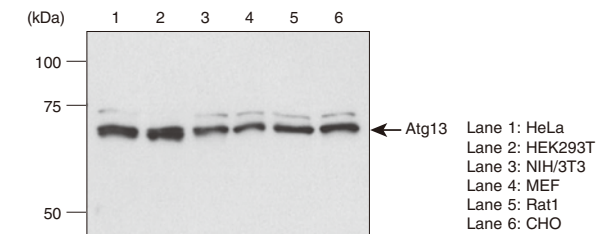
[Application] WB: 1 μ g/mL

IP: 2 μ g/300 μ L cell extract from 3×10^6 cells

<References>

- 1) Ganley, I. G., *et al.*, J. Biol. Chem. 284, 12297-12305 (2009)
- 2) Hosokawa, N., *et al.*, Mol. Biol. Cell 20, 1981-1991 (2009)

■ Western blotting



Anti-Atg14 (Human) mAb

Code No.	Clone	Isotype	Size
M184-3MS	4H8	Mo IgG2a κ	20 μ g/20 μ L
M184-3	4H8	Mo IgG2a κ	100 μ g/100 μ L

[Immunogen] Recombinant human Atg14 (167-404 a.a.)

[Species cross-reactivity] Hu, Mo(-), Rat(-)

[Form] 1 mg/mL in PBS/50% glycerol, pH 7.2

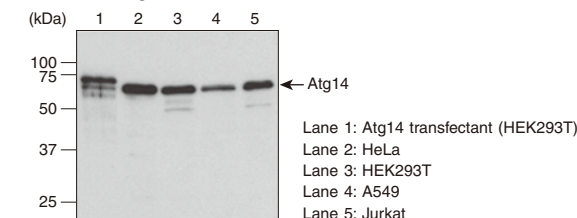
[Application] WB: 1 μ g/mL

IP: 2 μ g/300 μ L cell extract from 3×10^6 cells

<References>

- 1) Zhong, Y., *et al.*, Nat. Cell Biol. 11, 468-476 (2009)
- 2) Matsunaga, K., *et al.*, Nat. Cell Biol. 11, 385-396 (2009)

■ Western blotting



Anti-Atg14 pAb

Code No.	Clone	Isotype	Size
PD026MS	Polyclonal	Rab Ig (aff.)	20 μ L
PD026	Polyclonal	Rab Ig (aff.)	100 μ L

[Immunogen] Recombinant human Atg14 (167-404 a.a.)

[Species cross-reactivity] Hu, Mo, Rat, Hm(-)

[Form] PBS/50% glycerol, pH 7.2

[Application] WB: 1:500

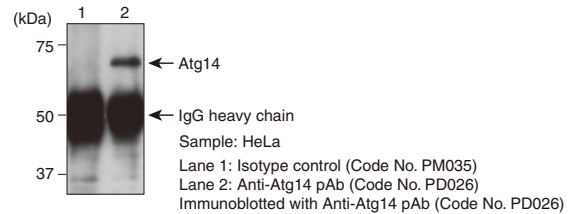
IP: 5 μ L/300 μ L of cell extract from 3×10^6 cells

IC*: reported in articles

<References>

- 1) Nemazanyy, I., *et al.*, Nat. Commun. 6, 8283 (2015) [IP]
- 2) Bejarano, E., *et al.*, Nat. Cell Biol. 16, 401-14 (2014) [WB, IC]

■ Immunoprecipitation



Anti-Atg16L mAb

Code No.	Clone	Isotype	Size
M150-3MS	1F12	Mo IgG1 κ	20 μ g/20 μ L
M150-3	1F12	Mo IgG1 κ	100 μ g/100 μ L

[Immunogen] Recombinant human Atg16L1 TV2 (85-588 a.a.)

[Species cross-reactivity] Hu, Mo, Rat

[Form] 1 mg/mL in PBS/50% glycerol, pH 7.2

[Application] WB: 1 μ g/mL

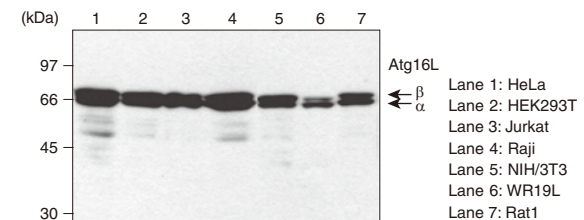
IH*: reported in articles

FCM*: reported in articles

<References>

- 1) Boada-Romero, E., *et al.*, Nat. Commun. 7, 11821 (2016) [WB]
- 2) Morozova, K., *et al.*, Nat. Commun. 6, 5856 (2015) [FCM, IF]
- 3) Adolph, T.E., *et al.*, Nature 503, 272-6 (2013) [IH]

■ Western blotting



Anti-Atg16L pAb

Code No.	Clone	Isotype	Size
PM040MS	Polyclonal	Rab Ig (aff.)	20 μ L
PM040	Polyclonal	Rab Ig (aff.)	100 μ L

[Immunogen] Recombinant human Atg16L1 TV2 (85-588 a.a.)

[Species cross-reactivity] Hu, Mo, Rat, Hm

[Form] PBS/50% glycerol, pH 7.2

[Application] WB: 1:1,000

IP: 2.5 μ L/300 μ L of cell extract from 3×10^6 cells

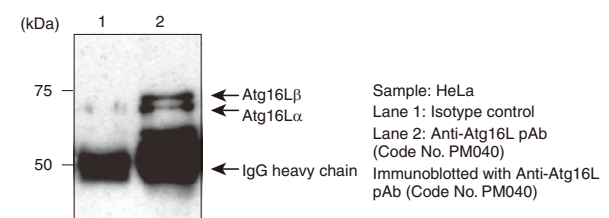
IC: 1:200-1:500

Image-based FCM*: reported in articles

<References>

- 1) Erbil, S., *et al.*, J. Biol. Chem. 291, 16753-16765 (2016) [WB]
- 2) Murthy, A., *et al.*, Nature 506, 456-62 (2014) [IP, Image-based FCM]

■ Immunoprecipitation



Antibodies for autophagy-related proteins

Anti-GABARAP mAb

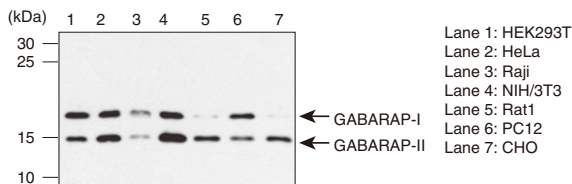
Code No.	Clone	Isotype	Size
M135-3MS	1F4	Mo IgG1	20 µg/20 µL
M135-3	1F4	Mo IgG1	100 µg/100 µL

[Immunogen] N-terminal region of human GABARAP (synthetic peptide)
 [Species cross-reactivity] Hu, Mo, Rat, Hm, Chi*
 [Form] 1 mg/mL in PBS/50% glycerol, pH 7.2
 [Application] WB: 1 µg/mL
 IC*: reported in articles
 IH*: reported in articles

<References>

- Zhang, Z., *et al.*, J. Immunol. 190, 3517-24 (2013) [WB]
- Colecchia, D., *et al.*, Autophagy 8, 1724-40 (2012) [IC]

■ Western blotting



Anti-GABARAP pAb

Code No.	Clone	Isotype	Size
PM037MS	Polyclonal	Rab Ig (aff.)	20 µL
PM037	Polyclonal	Rab Ig (aff.)	100 µL

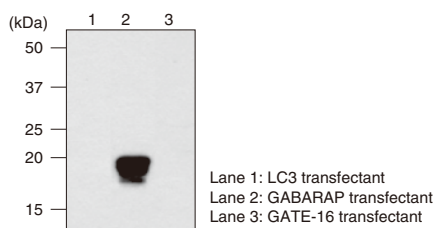
[Immunogen] N-terminal region of GABARAP (synthetic peptide)
 [Species cross-reactivity] Hu, Mo, Rat, Hm
 [Form] PBS/50% glycerol, pH 7.2
 [Application] WB: 1:1,000
 IC: 1:100

[Note] This antibody does not react with GATE-16 and LC3.

<References>

- Polletta, L., *et al.*, Autophagy 11, 253-70 (2015) [WB]
- Mariño, G., *et al.*, J. Clin. Invest. 120, 2331-44 (2010) [WB]

■ Western blotting



Anti-GATE-16 pAb

Code No.	Clone	Isotype	Size
PM038MS	Polyclonal	Rab Ig (aff.)	20 µL
PM038	Polyclonal	Rab Ig (aff.)	100 µL

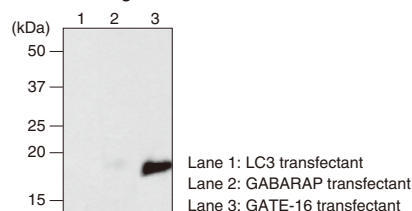
[Immunogen] N-terminal region of GATE-16 (synthetic peptide)
 [Species cross-reactivity] Hu, Mo, Rat, Hm
 [Form] PBS/50% glycerol, pH 7.2
 [Application] WB: 1:1,000
 IH*: reported in articles

[Note] This antibody does not react with LC3 and GABARAP.

<References>

- Niso-Santano, M., *et al.*, EMBO J. 34, 1025-1041 (2015) [WB]
- Tanji, K., *et al.*, Neurobiol. Dis. 43, 690-7 (2011) [WB, IH]

■ Western blotting



Anti-UVRAG mAb

Code No.	Clone	Isotype	Size
M160-3MS	1H4	Mo IgG1κ	20 µg/20 µL
M160-3	1H4	Mo IgG1κ	100 µg/100 µL

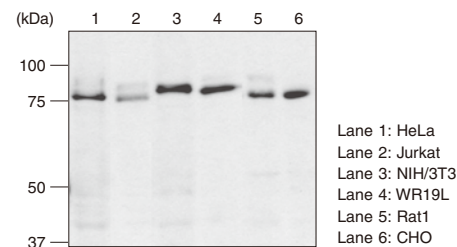
[Immunogen] Recombinant human UVRAG (389–699 a.a.)
 [Species cross-reactivity] Hu, Mo, Rat, Hm
 [Form] 1 mg/mL in PBS/50% glycerol, pH 7.2
 [Application] WB: 1 µg/mL

IP*: reported in articles
 IC*: reported in articles

<References>

- Nemazanyy, I., *et al.*, Nat. Commun. 6, 8283 (2015) [IP]
- Niso-Santano, M., *et al.*, EMBO J. 34, 1025-1041 (2015) [WB]

■ Western blotting



Anti-Beclin 1 pAb

Code No.	Clone	Isotype	Size
PD017MS	Polyclonal	Rab Ig (aff.)	20 µL
PD017	Polyclonal	Rab Ig (aff.)	100 µL

[Immunogen] Recombinant human Beclin 1 (1–450 a.a.)
 [Species cross-reactivity] Hu, Mo, Rat, Hm
 [Form] PBS/50% glycerol, pH 7.2
 [Application] WB: 1:1,000

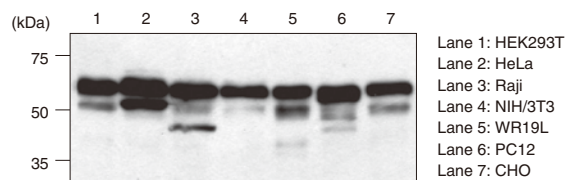
IP: 2.5 µL/200 µL of cell extract from 5x10⁶ cells
 IC: 1:100

IH*: reported in articles

<References>

- Munson, M.J., *et al.*, EMBO J. 34, 2272-2290 (2015) [WB]
- Hamasaki, M., *et al.*, Nature 495, 389-93 (2013) [WB]

■ Western blotting



Anti-Rubicon (Human) pAb

Code No.	Clone	Isotype	Size
PD027MS	Polyclonal	Rab Ig (aff.)	20 µL
PD027	Polyclonal	Rab Ig (aff.)	100 µL

[Immunogen] Recombinant human Rubicon (722–972 a.a.)
 [Species cross-reactivity] Hu, Mo(-)
 [Form] PBS/50% glycerol, pH 7.2
 [Application] WB: 1:1,000

IP: 5 µL/300 µL of cell extract from 3x10⁶ cells

<References>

- Bejarano, E., *et al.*, Nat. Cell Biol. 16, 401-14 (2014) [WB]
- Maejima, Y., *et al.*, Nat. Med. 19, 1478-88 (2013) [WB]

■ Western blotting



Autophagy
 Autophagy Flux Assay Kit
 Mitophagy
 LC3 antibodies
 p62 antibodies
 Phospho-p62 antibodies
 p62 and phospho-p62 ELISA Kit
 Antibodies for phospho-p62-related proteins
 Atg antibody series
 Antibodies for autophagy-related proteins
 Antibody sampler set
 FAQs

Anti-Rubicon (Human) mAb

Code No.	Clone	Isotype	Size
M170-3MS	1H6	Mo IgG2a κ	20 μ g/20 μ L
M170-3	1H6	Mo IgG2a κ	100 μ g/100 μ L

[Immunogen] Recombinant human Rubicon (722–972 a.a.)

[Species cross-reactivity] Hu, Mo(-)

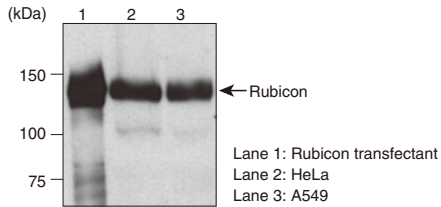
[Form] 1 mg/mL in PBS/50% glycerol, pH 7.2

[Application] WB: 1 μ g/mL

<References>

- 1) Matsunaga, K., *et al.*, Nat. Cell Biol. 11, 385-396 (2009)
- 2) Zhong, Y., *et al.*, Nat. Cell Biol. 11, 468-476 (2009)

■ Western blotting



Anti-VMP1 pAb

Code No.	Clone	Isotype	Size
PM072MS	Polyclonal	Rab Ig (aff.)	20 μ L
PM072	Polyclonal	Rab Ig (aff.)	100 μ L

[Immunogen] Recombinant human VMP1 (131–217 a.a.)

[Species cross-reactivity] Hu, Mo, Rat, Hm

[Form] PBS/50% glycerol, pH 7.2

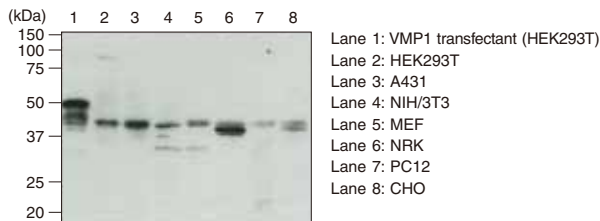
[Application] WB: 1:500

IP: 5 μ L/2x10⁶ cells/sample

<References>

- 1) Itakura, E., *et al.*, Autophagy. 6, 764-76 (2010)
- 2) Itakura, E., *et al.*, J. Cell Biol. 192, 17-27 (2011)

■ Western blotting



Anti-Syntaxin-17 (Human) pAb

Code No.	Clone	Isotype	Size
PM076MS	Polyclonal	Rab Ig (aff.)	20 μ L
PM076	Polyclonal	Rab Ig (aff.)	100 μ L

[Immunogen] Recombinant human Syntaxin-17 (1–302 a.a.)

[Species cross-reactivity] Hu, Mo(-), Rat(-)

[Form] PBS/50% glycerol, pH 7.2

[Application] WB: 1:1,000

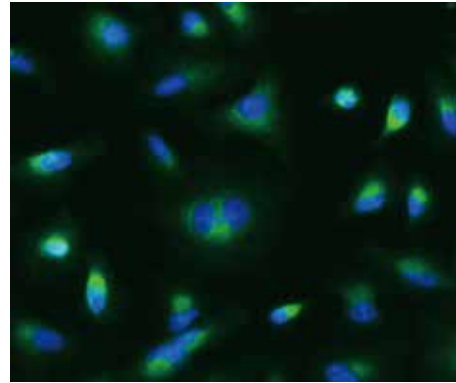
IP: 2.5 μ g/sample

IC: 1:2,000

<References>

- 1) Itakura, E., *et al.*, Cell 151, 1256–1269 (2012)

■ Immunocytochemistry



A549

Green: Anti-Syntaxin-17 (Human) pAb (Code No. PM076)
Blue: DAPI

Anti-Syntaxin-17 (Human) mAb

Code No.	Clone	Isotype	Size
M212-3MS	2F8	Mo IgG2a κ	20 μ g/20 μ L
M212-3	2F8	Mo IgG2a κ	100 μ g/100 μ L

[Immunogen] Recombinant human Syntaxin-17 (1-302 a.a.)

[Species cross-reactivity] Hu, Mo(-), Rat(-), Hm(-)

[Form] PBS/50% glycerol, pH7.2

[Application] WB: 1 μ g/mL

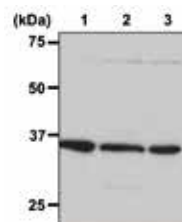
IP: 2 μ g/sample

IC: reported in articles

<References>

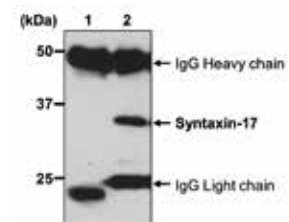
- 1) Hamasaki, M., *et al.*, Nature 495, 389-93 (2013)
- 2) Itakura, E., *et al.*, Cell 151, 1256-69 (2012)

■ Western blotting



Lane 1: Jurkat
Lane 2: A549
Lane 3: HeLa

■ Immunoprecipitation



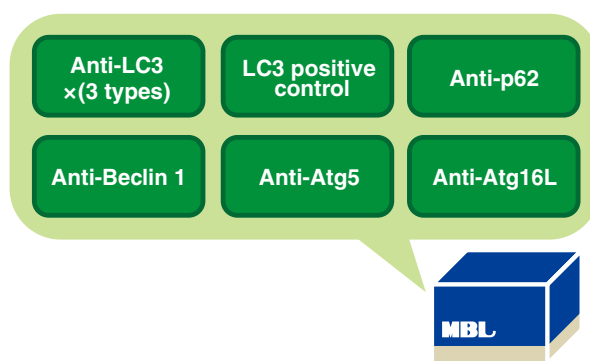
Sample: HeLa
Lane 1: Mouse IgG2a (Code No. M076-3)
Lane 2: Anti-Syntaxin-17 (Human) mAb (Code No. M212-3)
Immunoblotted with Anti-Syntaxin-17 mAb (Code No. M212-3)

Antibody sampler set

Autophagy Ab Sampler Set

Popular MBL antibodies for autophagy-related proteins are available in a set.

- ☉ For customers planning to start autophagy research.
- ☉ For customers interested in trying MBL autophagy antibodies.
- ☉ For customers interested in purchasing a small amount of several antibodies.



Code No.	Product name	Size
8485	Autophagy Ab Sampler Set	Antibodies: 25 μ L each, Positive control: 10 tests

Components

Code No.	Product name	Clone	Isotype	Application	Size	Species cross-reactivity
PM036Y	Anti-LC3 pAb	Polyclonal	Rabbit IgG	WB, IP, FCM, IC, IH	25 μ L	Hu, Mo, Rat, Hm
M186-3Y	Anti-LC3 mAb	8E10	Mouse IgG2a κ	WB	25 μ L	Hu, Mo, Rat, Hm
M152-3Y	Anti-LC3 mAb	4E12	Mouse IgG1 κ	WB, IP, FCM, IC, IH*, Immuno-EM, Immug-based-FCM*	25 μ L	Hu, Mo, Rat, Hm
PD017Y	Anti-Beclin 1 pAb	Polyclonal	Rabbit Ig (aff.)	WB, IP, IC	25 μ L	Hu, Mo, Rat, Hm
PM040Y	Anti-Atg16L pAb	Polyclonal	Rabbit Ig (aff.)	WB, IP, IC	25 μ L	Hu, Mo, Rat, Hm
PM045Y	Anti-p62 (SQSTM1) pAb	Polyclonal	Rabbit Ig (aff.)	WB, IP, IC, IH	25 μ L	Hu, Mo, Rat, Hm
PM050Y	Anti-Atg5 pAb	Polyclonal	Rabbit Ig (aff.)	WB	25 μ L	Hu, Mo, Rat
PM036-PNY	Positive control for anti-LC3 antibody			WB	100 μ L	

Autophagy	Autophagy Flux Assay Kit	Mitophagy	LC3 antibodies	p62 antibodies	Phospho-p62 antibodies	p62 and phospho-p62 ELISA Kit	Antibodies for phospho-p62-related proteins	Atg antibody series	Antibodies for autophagy-related proteins	Antibody sampler set	FAQs
-----------	--------------------------	-----------	----------------	----------------	------------------------	-------------------------------	---	---------------------	---	----------------------	------

FAQs (LC3 antibody)

Autophagy
Autophagy Flux Assay Kit
Mitophagy
LC3 antibodies
p62 antibodies
Phospho-p62 antibodies
p62 and phospho-p62 ELISA Kit
Antibodies for phospho-p62-related proteins
Atg antibody series
Antibodies for autophagy-related proteins
Antibody sampler set
FAQs

Q1 What can I do to induce starvation?

- In NRK cells, starvation can be induced by changing the media to Hank's Balanced Salt Solution (serum-free) and incubating for 2 – 4 hours. Serum-free DMEM (Dulbecco's modified Eagle's medium) can be used, but the induction is weaker because DMEM contains amino acids. Since optimal conditions depend on the cell type, experimental conditions should be determined for your cells of interest by thorough evaluation.

Q2 What percentage of gel should I use to detect LC3 by Western blotting (WB) ?

- We recommend 15%. The LC3-I and LC3-II bands overlap on a 10% gel, which makes them difficult to distinguish from each other.

Q3 LC3 bands are not detectable in Western blotting.

- Please refer to the datasheet and check for the following issues:
- Use a buffer containing SDS for sample preparation.
We recommend the SDS-PAGE sample buffer (Laemmli's sample buffer).
 - The washing step after blocking is essential when using a monoclonal antibody for detection.
LC3-II bands become more intense if 0.05% Tween-20/PBS is used for the washing (three times for 5 minutes each).
 - A positive control for WB (cell lysates expressing human LC3B) is available (Code No. PM036-PN).

Q4 Do you have any information about interpretation of LC3-I and LC3-II bands detected by WB?

- Please refer to the following publications for a detailed explanation of WB data for LC3.
- Mizushima, N. and Yoshimori, T., How to interpret LC3 immunoblotting. *Autophagy* 3(6), 542-545 (2007) PMID:17611390
- Klionsky, DJ., *et al.*, Guidelines for the use and interpretation of assays for monitoring autophagy in higher eukaryotes, *Autophagy* 4(2), 151-175 (2008) PMID: 18188003
- Klionsky, DJ., *et al.*, Guidelines for the use and interpretation of assays for monitoring autophagy, *Autophagy* 8(4), 445-544 (2012) PMID: 22966490

Q5 Are there any issues I should be aware of when performing immunocytochemistry?

- We use Digitonin (Sigma, D141) to permeabilize the membranes. The solvent is PBS (freshly prepared at a final concentration of 100 µg/mL). We do not recommend using Triton X-100 for membrane permeabilization.
-

Q6 What fixatives should I use for immunocytochemistry (IC)?

→ We use 4% PFA/PBS. Fixation with methanol or acetone is not recommended.

Q7 What fixatives should I use for immunohistochemistry (IH)?

→ We recommend 10% formalin solution (3.7% formaldehyde) or 4% PFA/PBS.

Q8 Can I stain frozen sections?

→ Use of cryosections has not been evaluated by MBL.

Q9 Which antibody is most recommended?

→ We recommend different antibodies depending on the application.

Below is a guideline:

WB: Code No. M186-3, PM036


IP: Code No. M152-3, PM036

IC: Code No. M152-3, PM036


FCM: Code No. M152-3, PM036

IH: Code No. PM036

For any other questions, please contact us by email or through the MBL Life Science website.



<https://www.mblbio.com/bio/g/>



Product list

Kit								
Page	Code No.	Product name						Size
P.4	8486	Autophagy Watch						1 kit
P.21	8485	Autophagy Ab Sampler Set						Antibodies: 25 µL each, Positive control: 10 tests
Antibody								
Page	Code No.	Product name	Clone	Isotype	Application	Size	Species cross-reactivity	
P.15	PD041	Anti-Atg2A pAb	Polyclonal	Rabbit Ig (aff.)	WB, IP, IC	100 µL	Hu, Mo, Rat, Hm	
P.15	M133-3	Anti-Atg3 mAb	3E8	Mouse IgG2bκ	WB, IP, IC	100 µg/100 µL	Hu, Mo, Rat, Hm	
P.15	M134-3	Anti-Atg4B mAb	9H5	Mouse IgG1	WB	100 µg/100 µL	Hu, Mo, Rat, Hm	
P.16	M153-3	Anti-Atg5 mAb	4D3	Mouse IgG1κ	WB	100 µg/100 µL	Hu, Mo, Rat, Hm	
P.16	PM050	Anti-Atg5 pAb	Polyclonal	Rabbit Ig (aff.)	WB	100 µL	Hu, Mo, Rat, Hm	
P.16	PM039	Anti-Atg7 (Human) pAb	Polyclonal	Rabbit Ig (aff.)	WB, IP	100 µL	Hu, Mo, Rat, Hm	
P.16	PM090	Anti-Atg8 (Filamentous fungi) pAb	Polyclonal	Rabbit Ig (aff.)	WB	100 µL	Filamentous fungi	
P.16	PD042	Anti-Atg9A pAb	Polyclonal	Rabbit Ig (aff.)	WB, IP, IC, IH*	100 µL	Hu, Mo, Rat, Hm	
P.16	M151-3	Anti-Atg10 (Human) mAb	5A7	Mouse IgG1κ	WB, IH*	100 µg/100 µL	Hu	
P.17	M154-3	Anti-Atg12 (Human) mAb	6E5	Mouse IgG1κ	WB, IP, IC	100 µg/100 µL	Hu, Mo, Rat, Hm	
P.17	M183-3	Anti-Atg13 mAb	5G4	Mouse IgG2aκ	WB, IP	100 µg/100 µL	Hu, Mo, Rat, Hm	
P.17	M184-3	Anti-Atg14 (Human) mAb	4H8	Mouse IgG2aκ	WB, IP	100 µg/100 µL	Hu, Mo, Rat	
P.17	PD026	Anti-Atg14 pAb	Polyclonal	Rabbit Ig (aff.)	WB, IP, IC*	100 µL	Hu, Mo, Rat, Hm	
P.17	M150-3	Anti-Atg16L mAb	1F12	Mouse IgG1κ	WB, FCM*, IH*	100 µg/100 µL	Hu, Mo, Rat	
P.17	PM040	Anti-Atg16L pAb	Polyclonal	Rabbit Ig (aff.)	WB, IP, IC, Other*	100 µL	Hu, Mo, Rat, Hm	
P.18	PD017	Anti-Beclin 1 pAb	Polyclonal	Rabbit Ig (aff.)	WB, IP, IC, IH*	100 µL	Hu, Mo, Rat, Hm	
P.18	M135-3	Anti-GABARAP mAb	1F4	Mouse IgG1	WB, IC*, IH*	100 µg/100 µL	Hu, Mo, Rat, Hm, Chi*	
P.18	PM037	Anti-GABARAP pAb	Polyclonal	Rabbit Ig (aff.)	WB, IC	100 µL	Hu, Mo, Rat, Hm	
P.18	PM038	Anti-GATE-16 pAb	Polyclonal	Rabbit Ig (aff.)	WB, IH*	100 µL	Hu, Mo, Rat, Hm	
P.14	M224-3	Anti-KEAP1 mAb	KP1	Mouse IgG2aκ	WB	100 µg/100 µL	Hu, Mo, Rat, Hm	
P.8	M152-3	Anti-LC3 mAb	4E12	Mouse IgG1κ	WB, IP, FCM, IC, IH*, Other*, Other*	200 µg/100 µL	Hu, Mo, Rat, Hm	
P.7	M186-3	Anti-LC3 mAb	8E10	Mouse IgG2aκ	WB, IP*	100 µg/100 µL	Hu, Mo, Rat, Hm	
P.8	M186-7	Anti-LC3 mAb-HRP-Direct	8E10	Mouse IgG2aκ	WB	50 µL	Hu, Mo, Rat, Hm	
P.8	PM036	Anti-LC3 pAb	Polyclonal	Rabbit IgG	WB, IP, FCM, IC, IH, Other*	100 µL	Hu, Mo, Rat, Hm, Zeb*	
P.8	PD014	Anti-LC3 pAb	Polyclonal	Rabbit IgG	WB, IC*, IH*	100 µL	Hu, Mo, Rat, Hm	
P.15	D071-3	Anti-Multi Ubiquitin mAb	FK1	Mouse IgM	WB	100 µg/100µL	Hu, Mo*	
P.15	D058-3	Anti-Multi Ubiquitin mAb	FK2	Mouse IgG1κ	WB, IC*, ELISA*, IH*	100 µg/100µL	Hu, Mo*, Mky*, Yeast*, Fruit fly*	
P.15	D058-8	Anti-Multi Ubiquitin mAb-Agarose	FK2	Mouse IgG1κ	IP	Gel: 200 µL	Hu	
P.15	D058-11	Anti-Multi Ubiquitin mAb-Magnetic Beads	FK2	Mouse IgG1κ	IP	20 tests (Slurry: 1 mL)	Hu	
P.14	M200-3	Anti-NRF2 mAb	1F2	Mouse IgG1κ	WB, IP, IC, IH	100 µg/100 µL	Hu, Mo, Rat, Hm	
P.14	PM069	Anti-NRF2 pAb	Polyclonal	Rabbit Ig (aff.)	WB, IP, IC, IH	100 µL	Hu, Mo(w), Rat(w), Hm(w)	
P.9	M162-3	Anti-p62 (SQSTM1) (Human) mAb	5F2	Mouse IgG1κ	WB, IP, FCM, IC, IH	100 µg/100 µL	Hu, Mo, Rat, Hm	
P.10	M162-A48	Anti-p62 (SQSTM1) (Human) mAb-Alexa Fluor® 488	5F2	Mouse IgG1κ	FCM, IC	100 µg/100 µL	Hu	
P.10	M162-A59	Anti-p62 (SQSTM1) (Human) mAb-Alexa Fluor® 594	5F2	Mouse IgG1κ	IC	100 µg/100 µL	Hu	
P.10	M162-A64	Anti-p62 (SQSTM1) (Human) mAb-Alexa Fluor® 647	5F2	Mouse IgG1κ	FCM, IC	100 µg/100 µL	Hu	
P.10	PM045	Anti-p62 (SQSTM1) pAb	Polyclonal	Rabbit Ig (aff.)	WB, IP, IC, IH, Other*	100 µL	Hu, Mo, Rat, Hm, Zeb*	
P.10	PM066	Anti-p62 C-terminal pAb	Polyclonal	Guinea pig Ig (aff.)	WB, IP, IC, IH	100 µL	Hu, Mo, Rat, Hm	
P.6	M230-3	Anti-Parkin mAb	Par6	Mouse IgG2aκ	WB	100 µg/100 µL	Hu, Mo, Rat	
P.12	M217-3	Anti-Phospho-p62 (SQSTM1) (Ser351) mAb	5D5	Mouse IgG1κ	WB, IC, IH	100 µg/100 µL	Hu, Mo, Rat*	
P.12	PM074	Anti-Phospho-p62 (SQSTM1) (Ser351) pAb	Polyclonal	Rabbit Ig (aff.)	WB, IP, IC, IH	100 µL	Hu, Mo	
P.12	D344-3	Anti-Phospho-p62 (SQSTM1) (Ser403) mAb	4C8	Rat IgG2aκ	WB, IH	100 µg/100 µL	Hu, Mo	
P.11	D343-3	Anti-Phospho-p62 (SQSTM1) (Ser403) mAb	4F6	Rat IgG2aκ	WB, IH	100 µg/100 µL	Hu, Mo	
P.19	M170-3	Anti-Rubicon (Human) mAb	1H6	Mouse IgG2aκ	WB, IH	100 µg/100 µL	Hu, Mo	
P.18	PD027	Anti-Rubicon (Human) pAb	Polyclonal	Rabbit Ig (aff.)	WB, IP, IH	100 µL	Hu, Mo	
P.19	M212-3	Anti-Syntaxin-17 (Human) mAb	2F8	Mouse IgG2aκ	WB, IP, IC*	100 µg/100 µL	Hu, Mo, Rat, Hm	
P.19	PM076	Anti-Syntaxin-17 (Human) pAb	Polyclonal	Rabbit Ig (aff.)	WB, IP, IC	100 µL	Hu, Mo, Rat	
P.14	MK-12-3	Anti-Ubiquitin mAb	2C5	Mouse IgG1	WB, IP*, IC*	100 µg/100 µL	Hu, Mo, Rat, Bov	
P.14	MK-11-3	Anti-Ubiquitin mAb	1B3	Mouse IgG1	WB, IC*, IH*, Other*	100 µg/100 µL	Hu, Mo*, Bov*	
P.18	M160-3	Anti-UVRAG mAb	1H4	Mouse IgG1κ	WB, IC*	100 µg/100 µL	Hu, Mo, Rat, Hm	
P.19	PM072	Anti-VMP1 pAb	Polyclonal	Rabbit Ig (aff.)	WB, IP	100 µL	Hu, Mo, Rat, Hm	
P.8	PM036-PN	Positive control for anti-LC3 antibody						100 µL (10 tests)
ELISA Kit								
Page	Code No.	Product name						Size
P.13	CY-7055	CycLex® Total p62 ELISA Kit						96 Assay
P.13	CY-7056	CycLex® Phospho-p62 Ser349 ELISA Kit						96 Assay
P.13	CY-7057	CycLex® Phospho-p62 Ser403 ELISA Kit						96 Assay
Vector								
Page	Code No.	Product name						Size
P.6	AM-V0259M	pMitophagy Keima-Red mPark2 (Kan)						20 µg
P.6	AM-V0259HM	pMitophagy Keima-Red mPark2 (Hyg)						20 µg
P.6	AM-V0251M	CoralHue® Mitochondria-targeted mKeima-Red (pMT-mKeima-Red)						20 µg
P.6	AM-V0251HM	CoralHue® Mitochondria-targeted monomeric Keima-Red (Hyg)						20 µg

Copyright © 2019 MEDICAL & BIOLOGICAL LABORATORIES CO., LTD. All Rights Reserved.

2019.11 153044-21061000

Produced by

MBL MEDICAL & BIOLOGICAL
LABORATORIES CO., LTD.

A JSR Life Sciences Company

SUMITOMO FUDOSAN SHIBADAIMON NICHOME BLDG.
2-11-8 Shibadaimon, Minato-ku, Tokyo 105-0012 Japan
TEL: +81-3-6854-3614 E-mail: support@mbi.co.jp
URL: <https://www.mblbio.com/bio/g/>