

Evaluation of HLA Class I Expression on Tumor Cells

- Anti-HLA class I (HLA-A,B,C) (Human) mAb -



MBL featured products

- [Anti-HLA class I \(HLA-A,B,C\) \(Human\) mAb, Clone : EMR8-5](#)

HLA Class I

The HLA (human leukocyte antigen) is the human variant of MHC (major histocompatibility complex). Human MHC class I antigen-epitope peptide complex associated with $\beta 2$ -microglobulin are expressed by all human nucleated cells. It plays an important role in cell-mediated immune responses. Abnormalities in MHC class I antigen surface expression are frequently found in malignancies and infectious diseases. They are often associated with reduced recognition by MHC class I antigen-restricted, tumor or virus-associated antigen-specific cytotoxic T lymphocytes and disease progression.

Tumor immune escape

Some tumor cells employ strategies to downregulate or inhibit the HLA Class I expression. Reduced HLA Class I expression impairs the ability of $CD8^+$ T cells to effectively recognize target tumor cells. This allows tumor cells to evade host immune surveillance and continue to proliferate within the host body. Evaluation of HLA class I expression may be an important indicator for prognosis and the efficacy of immune checkpoint inhibitor therapies¹⁾.

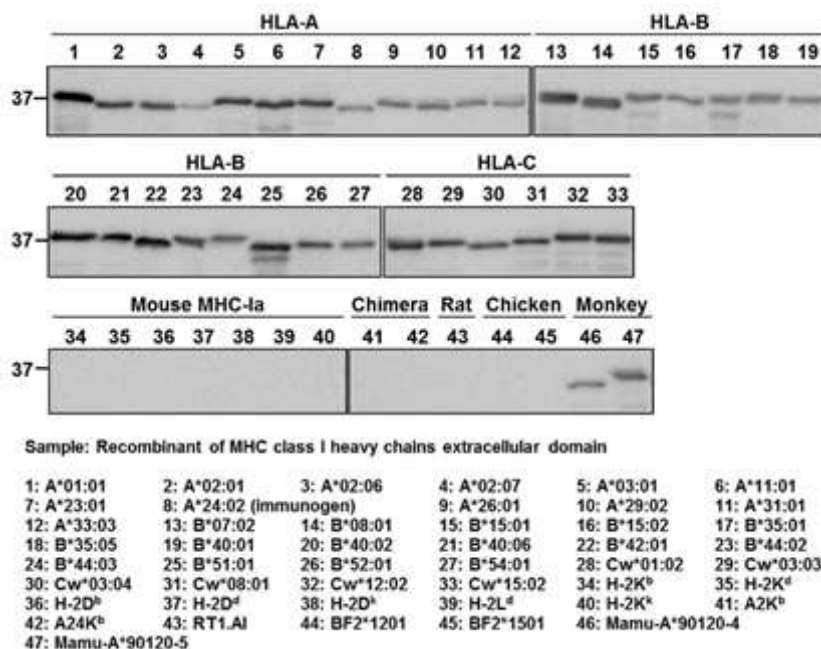
1) Imai, D., *et al.*, *Cancer Med.* **6**,1614-1626 (2017)

Product outline

- [Anti-HLA class I \(HLA-A,B,C\) \(Human\) mAb](#)

Code No.	D367-3	D370-3H
Immunogen	Recombinant HLA-A*24:02 extracellular domain	
Reactivity	Human	
Isotype	Mouse IgG1 κ	
Clone	EMR8-5	EMR8-5.1
Applications	WB, IHC, FCM	IHC (ready to use)

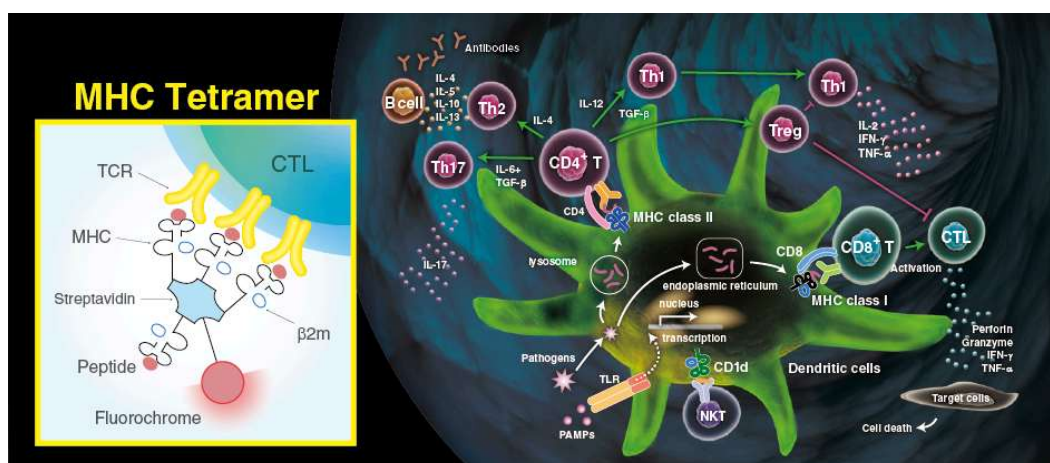
These antibodies react with a non-polymorphic epitope of human MHC class I antigens, HLA-A, -B, and -C. The EMR8-5.1 antibody is suitable for study of MHC class I down-regulation using routine formalin-fixed paraffin-embedded sections by immunohistochemistry.



Related Products for Immuno-oncology Research

- [MHC Tetramer](#)

Reagent for direct detection of antigen-specific T cells



Contact us!

Stay tuned for more updates and product information in our upcoming newsletters!
Thank you for choosing MBL for your biological research needs.

For research use only. Not for use in diagnostic or therapeutic procedures. The information is as of June 2025. Please contact us for the latest information. Please read the data sheets carefully before use

Please see the link below for the policy regarding the handling of personal information.

<https://www.mblbio.com/e/privacy/>

MEDICAL & BIOLOGICAL LABORATORIES CO., LTD.
SUMITOMO FUDOSAN SHIBADAIMON NICHOME BLDG.
2-11-8 Shibadaimon, Minato-ku, Tokyo 105-0012 Japan
E-mail: inquiry-ruo@mbi.co.jp
<https://www.mblbio.com/e/>

*If you have no recollection of this email, please contact us above.

*Reproducing all or any part of the contents is prohibited.

MEDICAL & BIOLOGICAL LABORATORIES CO., LTD.,2-11-8
Shibadaimon,SUMITOMO FUDOSAN SHIBADAIMON NICHOME
BLDG.,Minato-ku,Tokyo,105-0012,Japan

[Unsubscribe](#) [subscription settings](#)