

# Cytoskeleton, Inc.



**SPIROCHROME**  
Probes for Bioimaging

**PKmito™ Probes products**

**50% discount special**

**Valid until 2023 / 3 / 31**



We are proud to announce that the PKmito™ probes for gentle imaging of mitochondria in live cells have been developed and published by the lab of Zhixing Chen from Peking University. They were carefully designed to reduce the generation of reactive oxygen species during imaging and allow long-term imaging or timelapse STED imaging in live cells.

## Advantages:

- 1、PKmito™ probes are ideal for gentle mitochondria imaging
- 2、due to the low phototoxicity, long term live cell imaging with confocal or widefield is allowed
- 3、PKmito ORANGE is the ideal STED probe for mitochondria, staining the inner membrane and therefore revealing mitochondrial cristae

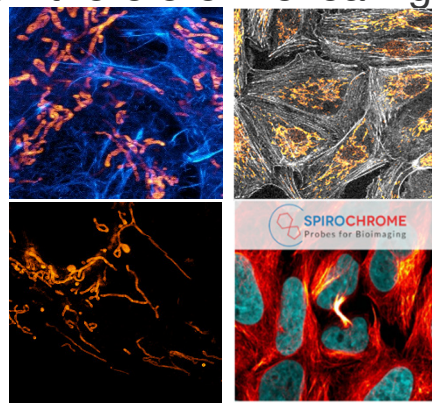
以下新產品 5 折 (3 月底前)

**Valid until 2023 / 3 / 31**

**CY-SC052 (PKmito RED)**

**CY-SC053 (PKmito ORANGE)**

**CY-SC055 (PKmito DEEP RED)**





**森淼大自然** 科技有限公司  
*Nature Opera Biotechnology Inc.*  
Tel: 02-27905097  
中南部專線: 0800-242526  
FAX: 02-27931322  
E-mail: [sales@naturebiotech.com.tw](mailto:sales@naturebiotech.com.tw)  
網站連結: [www.naturebiotech.com.tw](http://www.naturebiotech.com.tw)



Nature Opera Biotech  
森淼大自然



Cytoskeleton, Inc.  
The Protein Experts

