

For your AAV gene therapy research!

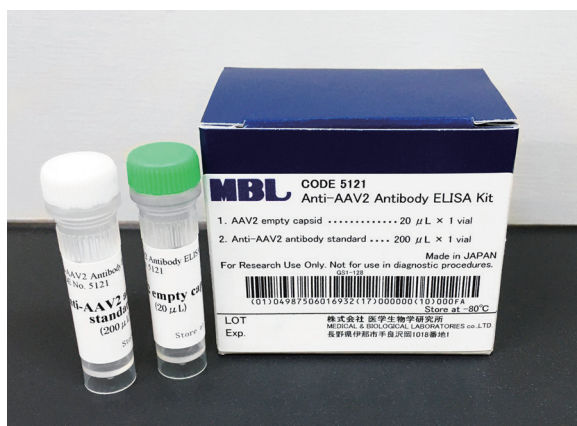
# anti-AAV Antibody ELISA Kit

Semi quantitative ELISA for human anti-AAV antibodies in sera



## Kit components

To measure human anti-AAV antibody, please use the following two Anti-AAV antibody ELISA kits in combination. The two kits are sufficient to produce one 96-well microplate.



### [Kit store at $-80^{\circ}\text{C}$ ]

AAV empty capsid and Human Anti-AAV antibody standard

+

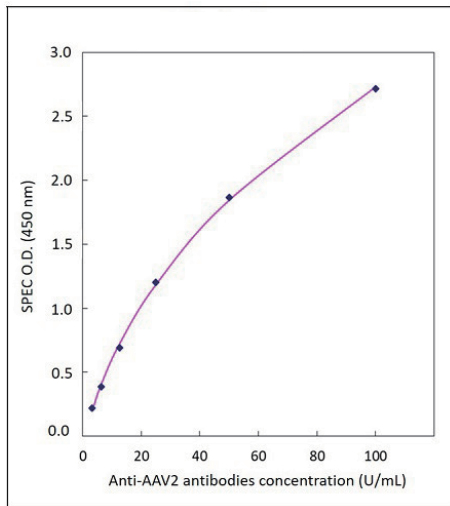


### [Kit store at $2-8^{\circ}\text{C}$ ]

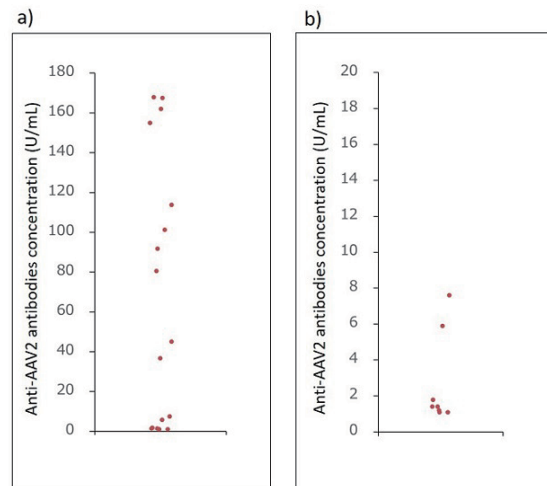
Microwell strips, Coating Buffer, Blocking Agent, Sample Diluent, Wash Concentrate, SA-HRP Diluent, Substrate Solution, Stop Solution

## Test example

Anti-AAV2 antibodies calibration curve



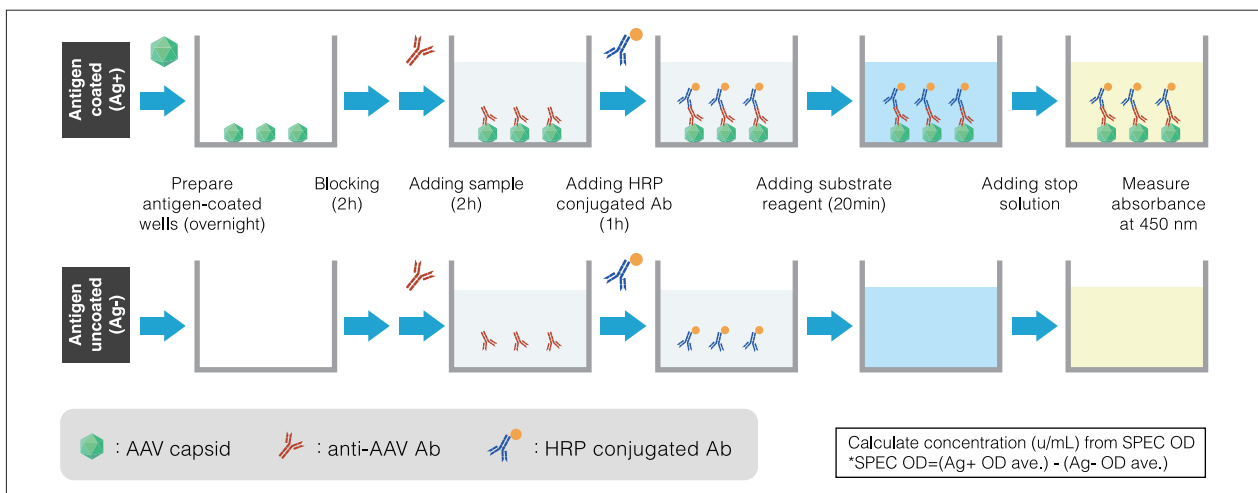
The Anti-AAV2 antibody concentration in sera derived from healthy adult volunteers (n=18).



a) A figure showing distribution of measured values of 18 samples.

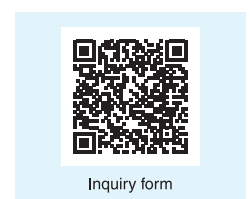
b) An enlarged figure of the plot of samples less than 20 U/mL of anti-AAV2 antibodies. (8 out of 18 samples)

## Principle of the test



## Product Information

Product name	Code No.	Storage temp.	
Anti-AAV2 Antibody ELISA Kit	5121	-80°C	Sold as set
	5122	2-8°C	
Anti-AAV5 Antibody ELISA Kit	5151	-80°C	Sold as set
	5152	2-8°C	



\*AAV empty capsid is a kit component subject to the regulations of the Law Concerning the Conservation and Sustainable Use of Biological Diversity through Regulations on the Use of Living Modified Organisms (Cartagena law) in Japan. Please handle it carefully according to the regulations of each user's facility.

For research use only. Not for use in diagnostic or therapeutic procedures.  
The information is as of November 2022. Please contact us for the latest information. Please read the data sheets carefully before use.  
Copyright © 2022 MEDICAL & BIOLOGICAL LABORATORIES CO., LTD. All Rights Reserved.

2022.11 154154-22111002N

Produced by

**MBL** MEDICAL & BIOLOGICAL  
LABORATORIES CO., LTD.

A JSR Life Sciences Company

SUMITOMO FUDOSAN SHIBADAIMON NICHOME BLDG.  
2-11-8 Shibadaimon, Minato-ku, Tokyo 105-0012 Japan  
TEL: +81-3-6854-3614 E-mail: support@mbl.co.jp  
URL: <https://www.mblbio.com/bio/g/>