



# Tag Antibodies

**MBL**<sup>®</sup>  
International Corporation

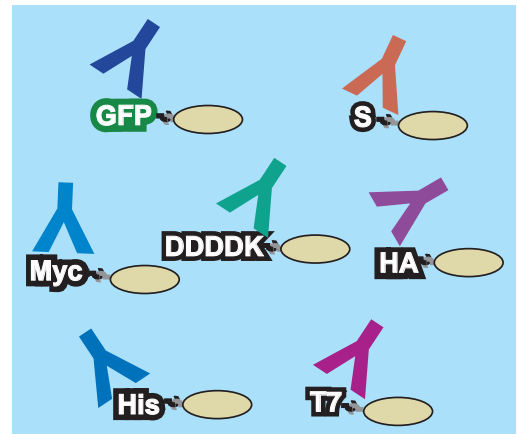
Products and Solutions to Advance Scientific Discoveries™

## Tag Antibodies

For research use only

GFP	HA-Tag	S-Tag	Fluorescent Proteins	for Gene Expression
RFP	His-Tag	T7-Tag	<i>CoralHue</i> <sup>®</sup> Azami-Green	Adenovirus Hexon
CBD	Luciferase	Thioredoxin	<i>CoralHue</i> <sup>®</sup> Dronpa-Green	Baculovirus envelope gp64
DDDDK-Tag	MBP	V5-Tag	<i>CoralHue</i> <sup>®</sup> Kaede	
β-Gal	Myc-Tag	VSV-G-Tag	<i>CoralHue</i> <sup>®</sup> Keima-Red	
GST-Tag	<i>c-Myc Tagged Protein</i> MILD PURIFICATION KIT		<i>CoralHue</i> <sup>®</sup> Kikume Green-Red	
			<i>CoralHue</i> <sup>®</sup> Kusabira-Orange	
			<i>CoralHue</i> <sup>®</sup> Midoriishi-Cyan	

Epitope tagging is a powerful and versatile strategy for detecting and purifying proteins expressed by cloned genes. Short sequences encoding the epitope tag are cloned in-frame with target DNA to produce fusion proteins containing the epitope tag peptide. Anti-epitope tag antibodies are widely used as universal purification or detection reagents for any tag-containing protein. MBL's epitope tag antibodies are optimally suited for identifying, detecting, purifying, and monitoring the expression levels of recombinant fusion proteins.



## GFP (Green Fluorescent Protein)

### Anti-GFP (Green Fluorescent Protein) monoclonal antibody

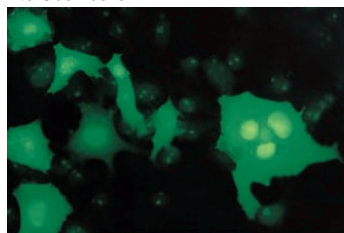
Code No.	Product	Clone	Isotype	Size	Applications
M048-3	anti-GFP (Green Fluorescent Protein)	1E4	mo IgG2b	0.1 mg	WB, IPP, IC
M048-3S	anti-GFP (Green Fluorescent Protein)	1E4	mo IgG2b	10 μL	WB, IPP, IC

Immunogen: GST-GFP(full length 246 a.a.) fusion protein  
 Specificity: Reacts with GFP transfectant. Also detects EGFP, pS65T-c1 and pRS-GFP.  
 Concentration: 1.0 mg/mL IgG in PBS/50% glycerol  
 Application: Western blotting: 1 μg/mL  
 Immunoprecipitation: 5 μg/mL  
 Immunocytochemistry: 2 μg/mL

■ Immunocytochemistry: GFP transfected into Cos7 cells

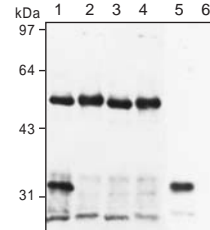


Anti-GFP monoclonal antibody (M048-3)



GFP autofluorescence

■ Immunoprecipitation, Western blotting



Anti-GFP monoclonal antibody

← Heavy chain

← GFP

Lane 1: GFP transfected 293T cells +anti-GFP antibody (IPP)  
 Lane 2: GFP transfected 293T cells +anti-TRADD antibody (IPP)  
 Lane 3: 293T cells+anti-GFP antibody (IPP)  
 Lane 4: 293T cells+anti-TRADD antibody (IPP)  
 Lane 5: GFP transfected 293T cells (WB)  
 Lane 6: 293T cells (WB)

Application; WB: Western blotting, IPP: Immunoprecipitation, FCM: Flow Cytometry, IC: Immunocytochemistry, IH: Immunohistochemistry, IF: Immunofluorescence Isotype; mo: Mouse, rab: Rabbit

For more information and to order, go to [www.mblintl.com](http://www.mblintl.com)

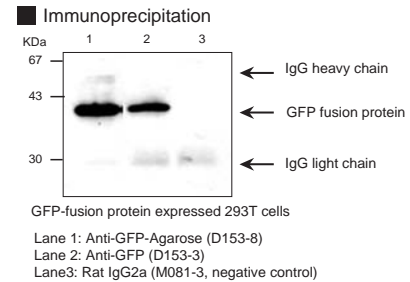
**MBL**<sup>®</sup> International Corporation

# GFP (Green Fluorescent Protein)

## Anti-GFP (Green Fluorescent Protein) monoclonal antibody

Code No.	Product	Clone	Isotype	Size	Applications
D153-3	anti-GFP (Green Fluorescent Protein)	RQ2	rat IgG2a	0.1 mg	IPP
D153-3S	anti-GFP (Green Fluorescent Protein)	RQ2	rat IgG2a	10 µL	IPP
D153-8	anti-GFP (Green Fluorescent Protein)-Agarose	RQ2	rat IgG2a	0.4 mL	IPP
D153-8S	anti-GFP (Green Fluorescent Protein)-Agarose	RQ2	rat IgG2a	50 µL	IPP

Immunogen: Purified GFP from GFP transfected 293T cells by affinity chromatography  
 Concentration: 1.0 mg/mL IgG in PBS/50% glycerol, pH 7.2 (D153-3)  
 0.1 mg antibody covalently coupled to 0.2 mL of agarose gel and provided as a 50% gel slurry suspended in PBS/0.09% NaN<sub>3</sub> (D153-8)  
 Application: Immunoprecipitation: 0.5-2 µg/200 µL of cell extract from 5x10<sup>6</sup> cells (D153-3)  
 20 µL/200 µL of cell extract from 5x10<sup>6</sup> cells (D153-8)



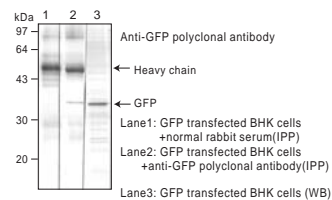
## Anti-GFP (Green Fluorescent Protein) polyclonal antibody

Code No.	Product	Clone	Isotype	Size	Applications
598	anti-GFP (Green Fluorescent Protein)	Polyclonal	rab IgG	0.1 mL	WB, IPP, IC
598S	anti-GFP (Green Fluorescent Protein)	Polyclonal	rab IgG	10 µL	WB, IPP, IC

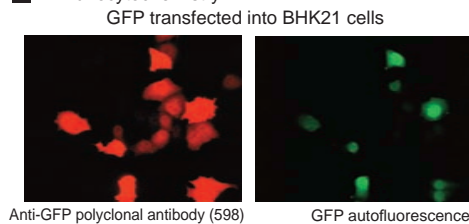
Immunogen: GST-GFP fusion protein  
 Form: In 10 mM phosphate buffer/0.3 M NaCl/0.1% NaN<sub>3</sub>, pH 8.0  
 Application: Western blotting: 1:1000-1:5000 for chemiluminescence detection system  
 Immunoprecipitation: 5 µL/100 µg of cell extract  
 Immunocytochemistry: 1:500

References: 1) Cubitt, A. B. et al., *Trends Biochem. Sci.* **20**, 448-455 (1995)  
 2) Chalfie, M. et al., *Science* **263**, 802-805 (1994)

**Western blotting, Immunoprecipitation**



**Immunocytochemistry:**



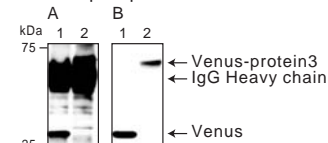
Photos were provided by Dr. Futoshi Shibasaki, Tokyo Metropolitan Institute of Medical Science.

**Reactivity with Venus**

**Western blotting**



**Immunoprecipitation**



Lane 1: Venus + anti-GFP (598)  
 Lane 2: Venus-protein3 + anti-GFP (598)  
 After Immunoprecipitation, A: Protein staining, B: Immunostaining

Code No.	Product	Clone	Isotype	Size	Applications
JM-3999-100	anti-GFP (Green Fluorescent Protein)	Polyclonal	rab IgG	0.1 mg	WB, IPP

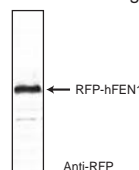
# RFP (Red Fluorescent Protein/DsRed)

## Anti-RFP (Red Fluorescent Protein/DsRed) polyclonal antibody

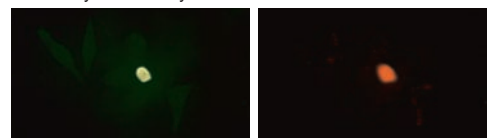
Code No.	Product	Clone	Isotype	Size	Applications
PM005	anti-RFP (Red Fluorescent Protein)	Polyclonal	rab IgG	0.1 mL	WB, IC
PM005S	anti-RFP (Red Fluorescent Protein)	Polyclonal	rab IgG	10 µL	WB, IC

Immunogen: RFP (Red fluorescent protein)  
 Form: In PBS/50% glycerol  
 Application: Western blotting: 1:1000  
 Immunocytochemistry: 1:500

**Western blotting**



**Immunocytochemistry**



Application: WB: Western blotting, IPP: Immunoprecipitation, FCM: Flow Cytometry, IC: Immunocytochemistry, IH: Immunohistochemistry, IF: Immunofluorescence, WWB: West-Western blotting

To order or for more information, go to [www.mblintl.com](http://www.mblintl.com)

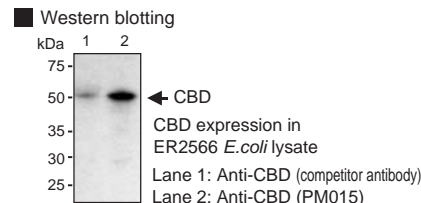
Isotype: mo: Mouse, rab: Rabbit

# Chitin Binding Domain

## Anti-Chitin Binding Domain polyclonal antibody

Code No.	Product	Clone	Isotype	Size	Applications
PM015	anti-Chitin Binding Domain	Polyclonal	rab IgG	0.1 mL	WB
PM015S	anti-Chitin Binding Domain	Polyclonal	rab IgG	10 $\mu$ L	WB

Immunogen: KLH-TTNPGVSAWQVNTAYTAGQLVITYNGKTYK  
 Form: In PBS/50% glycerol, pH 7.2  
 Application: Western blotting: 1:1000 for chemiluminescence detection system

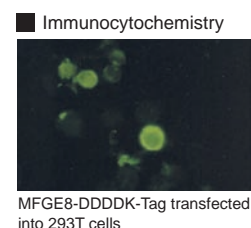
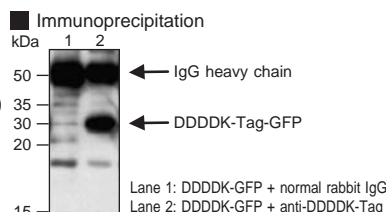


## DDDDK-Tag

### Anti-DDDDK-Tag polyclonal antibody

Code No.	Product	Clone	Isotype	Size	Applications
PM020	anti-DDDDK-Tag	Polyclonal	rab IgG	0.1 mg	WB, IC, IPP
PM020S	anti-DDDDK-Tag	Polyclonal	rab IgG	20 $\mu$ L	WB, IC, IPP
PM020-8	anti-DDDDK-Tag-Agarose	Polyclonal	rab IgG	0.4 mL	IPP

Immunogen: carrier protein-XXXDDDDKC, carrier protein-CXXXDDDDK  
 Concentration: 1.0 mg/mL IgG in PBS/50% glycerol, pH 7.2  
 Application: Western blotting: 1  $\mu$ g/mL for chemiluminescence detection system  
 Immunoprecipitation: 5  $\mu$ g/10  $\mu$ g of the recombinant protein (PM020, PM020-S)  
 20  $\mu$ L/200  $\mu$ L of cell extract from 5 x 10<sup>6</sup> cells (PM020-8)  
 Immunocytochemistry: 10  $\mu$ g/mL

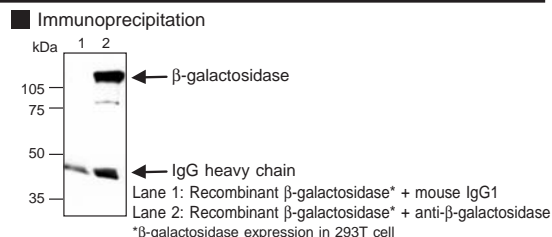


## $\beta$ -galactosidase

### Anti- $\beta$ -galactosidase monoclonal antibody

Code No.	Product	Clone	Isotype	Size	Applications
M094-3	anti- $\beta$ -galactosidase	5A3	mo IgG1	0.1 mg	WB, IPP, IC, IH
M094-3S	anti- $\beta$ -galactosidase	5A3	mo IgG1	10 $\mu$ L	WB, IPP, IC, IH

Immunogen: *E. coli*  $\beta$ -galactosidase  
 Concentration: 1.0 mg/mL IgG in PBS/50% glycerol, pH 7.2  
 Application: Western blotting: 1  $\mu$ g/mL for chemiluminescence detection system  
 Immunoprecipitation: 1  $\mu$ g/200  $\mu$ L of cell extract from 5x10<sup>6</sup> cells  
 Immunohistochemistry: 10  $\mu$ g/mL  
 Immunocytochemistry: 5  $\mu$ g/mL

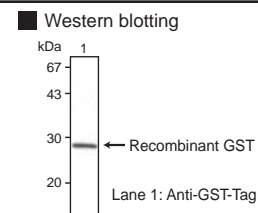


## GST-Tag

### Anti-GST-Tag monoclonal antibody

Code No.	Product	Clone	Isotype	Size	Applications
M071-3	anti-GST-Tag	3B2	mo IgG2b	0.1 mg	WB, IPP
M071-3S	anti-GST-Tag	3B2	mo IgG2b	10 $\mu$ L	WB, IPP
M071-7	anti-GST-Tag-HRP	3B2	mo IgG2b	0.1 mL	WB
M071-7S	anti-GST-Tag-HRP	3B2	mo IgG2b	50 $\mu$ L (10x diluted)	WB

Immunogen: Recombinant GST protein  
 Form: 1.0 mg/mL IgG in PBS/50% glycerol (M071-3)  
 In PBS/1% BSA/0.01% Benzalkonium Chloride (M071-7)  
 Application: Western blotting: 1  $\mu$ g/mL (M071-3)  
 1:1000 (M071-7)  
 Immunoprecipitation: 5  $\mu$ g/100  $\mu$ L of *E. coli* extracts containing GST-Tag fusion protein (M071-3)



Application: WB: Western blotting, IPP: Immunoprecipitation, FCM: Flow Cytometry, IC: Immunocytochemistry, IH: Immunohistochemistry, IF: Immunofluorescence, WWB: West-Western blotting  
 Isotype: mo: Mouse, rab: Rabbit

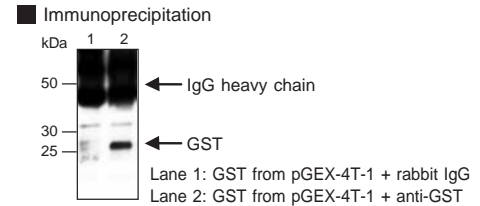
To order or for more information, go to [www.mblintl.com](http://www.mblintl.com)

# GST-Tag

## Anti-GST-Tag polyclonal antibody

Code No.	Product	Clone	Isotype	Size	Applications
PM013	anti-GST-Tag	Polyclonal	rab IgG	0.1 mL	WB, IPP
PM013S	anti-GST-Tag	Polyclonal	rab IgG	10 µL	WB, IPP

Immunogen: Recombinant GST protein (pGEX-5X-3)  
 Concentration: 1.0 mg/mL IgG in PBS/50% glycerol, pH7.2  
 Application: Western blotting: 1 µg/mL for chemiluminescence detection system  
 Immunoprecipitation: 5 µg/200 µL of *E. coli* cell lysate



Code No.	Product	Clone	Isotype	Size	Applications
JM-3997-100	anti-GST-Tag	Polyclonal	rab IgG	0.1 mg	WB

# HA-Tag

## Anti-HA-Tag monoclonal antibody

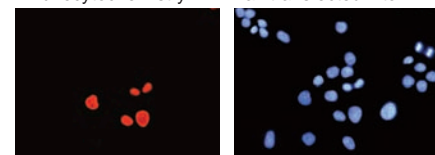
Code No.	Product	Clone	Isotype	Size	Applications
JM-3996-200	anti-HA-Tag	2C16	mo IgG1	0.2 mg	WB, IPP, IC
JM-3996B-100	anti-HA-Tag-Biotin	2C16	mo IgG1	0.1 mg	WB, IPP, IC
JM-3996F-100	anti-HA-Tag-FITC	2C16	mo IgG1	0.1 mg	IC

## Anti-HA-Tag polyclonal antibody

Code No.	Product	Clone	Isotype	Size	Applications
561	anti-HA-Tag	Polyclonal	rab IgG	0.1 mL	WB, IPP, IC
561-5	anti-HA-Tag	Polyclonal	rab IgG	0.5 mL	WB, IPP, IC
561S	anti-HA-Tag	Polyclonal	rab IgG	10 µL (10x diluted)	WB, IPP, IC
561-8	anti-HA-Tag-Agarose	Polyclonal	rab IgG	0.4 mL	IPP

Immunogen: YPYDVPDYA (HA-Tag)-KLH  
 Form: In PBS/50% glycerol, pH 7.2  
 Application: Western blotting: 1:1000 for chemiluminescence detection system  
 Immunoprecipitation: 1 µL/200 µL of cell extract from 2x10<sup>6</sup> cells (561, 561-5, 561S)  
 20 µL/200 µL of cell extract from 5x10<sup>6</sup> cells (561-8)  
 Immunocytochemistry: 1:200

■ Immunocytochemistry: HA-Max transfected into BHK cells



Anti-HA antibody (561)      Hoechst staining

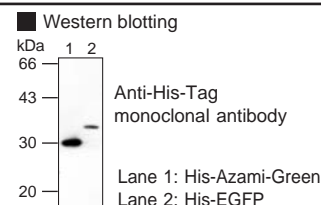
Photos were provided by Dr. Futoshi Shibasaki,  
 Tokyo Metropolitan Institute of Medical Science

# His-Tag

## Anti-His-Tag monoclonal antibody

Code No.	Product	Clone	Isotype	Size	Applications
M089-3	anti-His-Tag	6C4	mo IgG1	0.1 mg	WB
M089-3S	anti-His-Tag	6C4	mo IgG1	10 µL	WB

Immunogen: 6His synthetic peptide  
 Concentration: 1.0 mg/mL IgG in PBS/50% glycerol, pH 7.2  
 Application: Western blotting: 1 µg/mL  
 References: 1) Porath, J. et al., *Protein Express. Purif.* 3, 263-281 (1992)



Application: WB: Western blotting, IPP: Immunoprecipitation, FCM: Flow Cytometry, IC: Immunocytochemistry, IH: Immunohistochemistry, IF: Immunofluorescence, WWB: West-Western blotting

To order or for more information, go to [www.mblintl.com](http://www.mblintl.com)

Isotype: mo: Mouse, rab: Rabbit

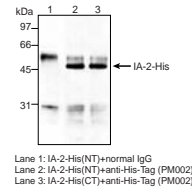
# His-Tag

## Anti-His-Tag polyclonal antibody

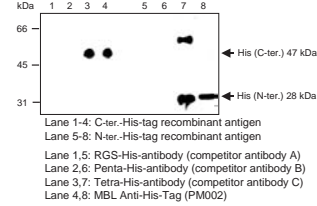
Code No.	Product	Clone	Isotype	Size	Applications
PM002	anti-His-Tag	Polyclonal	rab Ig	0.1 mL	WB, IPP
PM002S	anti-His-Tag	Polyclonal	rab Ig	10 µL	WB, IPP

Immunogen: His-Tag synthetic peptide (CHHHHHH-KLH)  
 Specificity: Recognizes His-Tag fusion protein  
 Form: In PBS/50% glycerol  
 Application: Western blotting: 1:1000  
 Immunoprecipitation: 10 µL/0.5 µg purified protein

### Immunoprecipitation



### Western blotting



Code No.	Product	Clone	Isotype	Size	Applications
JM-3998-100	anti-His-Tag	Polyclonal	rab IgG	0.1 mg	WB, IPP, IC

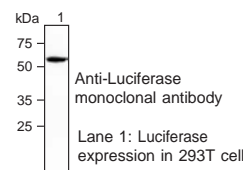
# Luciferase

## Anti-Luciferase monoclonal antibody

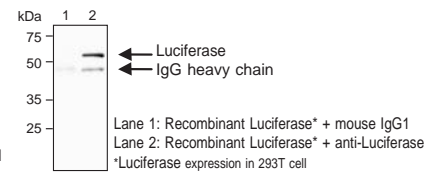
Code No.	Product	Clone	Isotype	Size	Applications
M095-3	anti-Luciferase	2D4	mo IgG1	0.1 mg	WB, IPP
M095-3S	anti-Luciferase	2D4	mo IgG1	10 µL	WB, IPP

Immunogen: Recombinant full length luciferase (*Photinus pyralis*)  
 Concentration: 1.0 mg/mL IgG in PBS/50% glycerol, pH 7.2  
 Application: Western blotting: 1 µg/mL for chemiluminescence detection system  
 Immunocytochemistry: 5 µg/200µL of cell extract from 5x10<sup>6</sup> cells

### Western blotting



### Immunoprecipitation



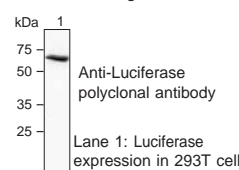
References: 1) Xu, G. et al., *Mol. Pharmacol.* **59**, 485-492 (2001)

## Anti-Luciferase polyclonal antibody

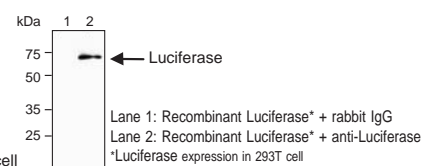
Code No.	Product	Clone	Isotype	Size	Applications
PM016	anti-Luciferase	Polyclonal	rab IgG	0.1 mL	WB, IPP, IC, IH
PM016S	anti-Luciferase	Polyclonal	rab IgG	10 µL	WB, IPP, IC, IH

Immunogen: Recombinant full length luciferase (*Photinus pyralis*)  
 Form: In PBS/50% glycerol, pH 7.2  
 Application: Western blotting: 1:1000 for chemiluminescence detection system  
 Immunoprecipitation: 5 µg/200 µL of cell extract from 5x10<sup>6</sup> cells  
 Immunohistochemistry: 10 µg/mL (Heat treatment is necessary for paraffin embedded section)  
 Immunocytochemistry: 5 µg/mL

### Western blotting



### Immunoprecipitation



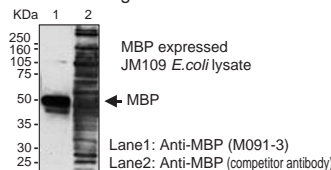
# MBP (Maltose Binding Protein)

## Anti-MBP (Maltose Binding Protein) monoclonal antibody

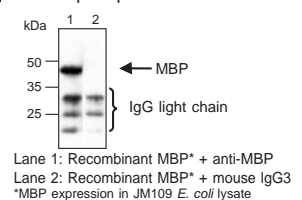
Code No.	Product	Clone	Isotype	Size	Applications
M091-3	anti-MBP (Maltose Binding Protein)	1G12	mo IgG3	0.1 mg	WB, IPP
M091-3S	anti-MBP (Maltose Binding Protein)	1G12	mo IgG3	10 µL	WB, IPP

Immunogen: pMALC2-G/JM109  
 Concentration: 1.0 mg/mL IgG in PBS/50% glycerol, pH 7.2  
 Application: Western blotting: 1 µg/mL  
 Immunoprecipitation: 2 µg/100 µg of *E. coli* lysate

### Western blotting



### Immunoprecipitation



Application: WB: Western blotting, IPP: Immunoprecipitation, FCM: Flow Cytometry, IC: Immunocytochemistry, IH: Immunohistochemistry, IF: Immunofluorescence, WWB: West-Western blotting  
 Isotype: mo: Mouse, rab: Rabbit

To order or for more information, go to [www.mblintl.com](http://www.mblintl.com)

# Myc-Tag

## Anti-Myc-Tag monoclonal antibody

Code No.	Product	Clone	Isotype	Size	Applications
M047-3	anti-Myc-Tag	PL14	mo IgG1	0.2 mg	WB, IPP, IC
M047-3S	anti-Myc-Tag	PL14	mo IgG1	10 µL	WB, IPP, IC
M047-6	anti-Myc-Tag-Biotin	PL14	mo IgG1	0.1 mL	WB, IC
M047-6S	anti-Myc-Tag-Biotin	PL14	mo IgG1	10 µL	WB, IC
M047-7	anti-Myc-Tag-HRP	PL14	mo IgG1	0.1 mL	WB, IC
M047-7S	anti-Myc-Tag-HRP	PL14	mo IgG1	10 µL	WB, IC
M047-8	anti-Myc-Tag-Agarose	PL14	mo IgG1	0.4 mL	IPP
M047-8S	anti-Myc-Tag-Agarose	PL14	mo IgG1	50 µL	IPP

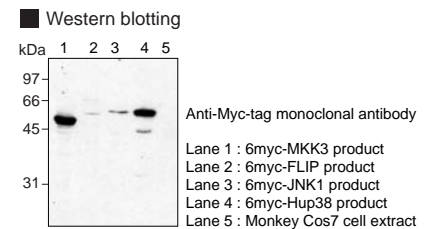
Immunogen: GST-6myc-Tag fusion protein  
 Form: 2.0 mg/mL IgG in PBS/50% glycerol (M047-3)  
 In NaPB/0.3 M NaCl/0.1% NaN<sub>3</sub>, pH 8.0(M047-6)  
 In PBS/1% BSA/10% glycerol/0.01% p-hydroxyphenylacetic acid/0.15% Pro Clin150 (M047-7)  
 0.2 mg antibody covalently coupled to 0.2 mL of agarose gel and provided as a 50% gel slurry suspended in PBS/0.09% NaN<sub>3</sub> (M047-8)

Application: Western blotting: 1 µg/mL (M047-3)  
 1:1000 (M047-6)  
 1:500 for chemiluminescence detection system (M047-7)

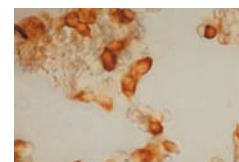
Immunoprecipitation: 5 µg/mL (M047-3)  
 20 µL/200 µL of cell extract from 5x10<sup>6</sup> cells (M047-8)

Immunocytochemistry: 2 µg/mL (M047-3)  
 1:100 (M047-6, M047-7)

References: 1) Hirota, K. et al., *J. Biol. Chem.* **278**, 13056-13060 (2003) 3) Sasaki, A. et al., *J. Biol. Chem.* **277**, 22541-22546 (2002)  
 2) Tojo, M. et al., *J. Biol. Chem.* **277**, 46576-46585 (2002) 4) Ohya, T. et al., *J. Biol. Chem.* **277**, 28099-28108 (2002)  
 Clone PL14 is used in these references.



Immunocytochemistry  
 Mouse TRAF1-fusion protein expressed 293T Cells



Anti-Myc-Tag-HRP (M047-7)

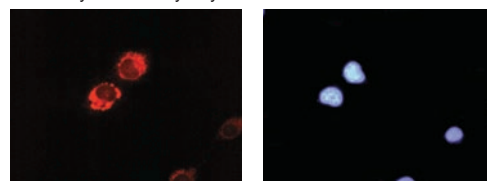
## Anti-Myc-Tag polyclonal antibody

Code No.	Product	Clone	Isotype	Size	Applications
562	anti-Myc-Tag	Polyclonal	rab IgG	0.1 mL	WB, IPP, IC
562-5	anti-Myc-Tag	Polyclonal	rab IgG	0.5 mL	WB, IPP, IC
562S	anti-Myc-Tag	Polyclonal	rab IgG	10 µL (10x diluted)	WB, IPP, IC

Immunogen: EQKLISEEDL (Myc-Tag)-KLH  
 Form: In PBS/50% glycerol, pH 7.2  
 Application: Western blotting: 1:1000 for chemiluminescence detection system  
 Immunoprecipitation: 2 µL/200 µL of cell extract from 2x10<sup>6</sup> cells  
 Immunocytochemistry: 1:250

References: 1) Field, J. et al., *Mol. Cell Biol.* **8**, 2159-2165 (1988)  
 2) Heald, R. et al., *Cell* **74**, 463-474 (1993)

Immunocytochemistry: Myc-Bcl-2 cDNA transfected into BHK cells

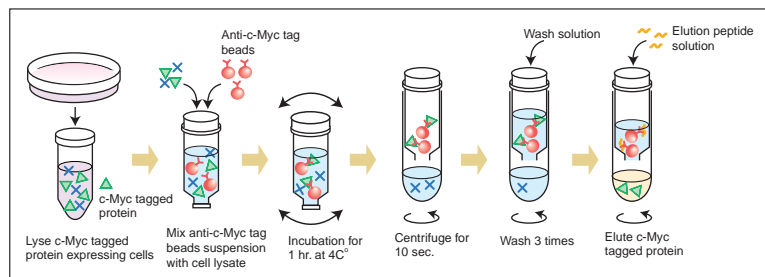


Anti-Myc antibody (562)      Hoechst staining

Photos were provided by Dr. Futoshi Shibasaki, Tokyo Metropolitan Institute of Medical Science.

## c-Myc Tagged Protein MILD PURIFICATION KIT

- Efficiently purify Myc-tagged proteins in just minutes
- Neutral pH preserves protein conformation and activity!  
 (Other kits use acid or alkali, which damage proteins)
- Ideal for use with enzymatic assays and binding studies
- Quick, easy protocol!



Code No.	Product	Size
3300	c-Myc Tagged Protein MILD PURIFICATION KIT	20 tests

Application; WB: Western blotting, IPP: Immunoprecipitation, FCM: Flow Cytometry, IC: Immunocytochemistry, IH: Immunohistochemistry, IF: Immunofluorescence, WWB: West-Western blotting

To order or for more information, go to [www.mblintl.com](http://www.mblintl.com)

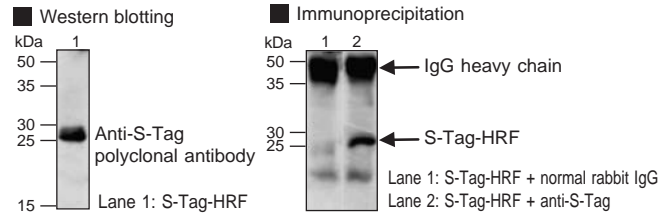
Isotype; mo: Mouse, rab: Rabbit

# S-Tag

## Anti-S-Tag polyclonal antibody

Code No.	Product	Clone	Isotype	Size	Applications
PM021	anti-S-Tag	Polyclonal	rab IgG	0.1 mg	WB, IPP
PM021S	anti-S-Tag	Polyclonal	rab IgG	10 $\mu$ L	WB, IPP
PM021-8	anti-S-Tag-Agarose	Polyclonal	rab IgG	0.4 mL	IPP

Immunogen: carrier protein-KETAAAKFERQHIDSC  
 Concentration: 1.0 mg/mL IgG in PBS/50% glycerol, pH 7.2  
 Application: Western blotting: 1  $\mu$ g/mL for chemiluminescence detection system  
 Immunoprecipitation: 5  $\mu$ g/200  $\mu$ L of *E. coli* lysate (PM021, PM021S)  
 20  $\mu$ L/200  $\mu$ g of *E. coli* lysate (PM021-8)

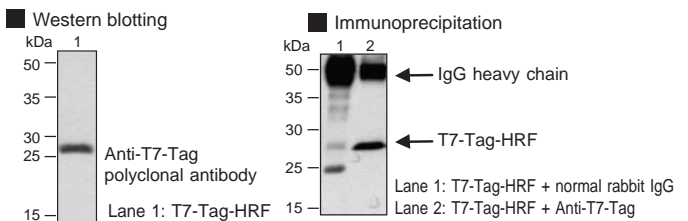


# T7-Tag

## Anti-T7-Tag polyclonal antibody

Code No.	Product	Clone	Isotype	Size	Applications
PM022	anti-T7-Tag	Polyclonal	rab IgG	0.1 mg	WB, IPP
PM022S	anti-T7-Tag	Polyclonal	rab IgG	10 $\mu$ L	WB, IPP
PM022-8	anti-T7-Tag-Agarose	Polyclonal	rab IgG	0.4 mL	IPP

Immunogen: carrier protein-MASMTGGQQMGC  
 Concentration: 1.0 mg/mL IgG in PBS/50% glycerol, pH 7.2  
 Application: Western blotting: 1  $\mu$ g/mL for chemiluminescence detection system  
 Immunoprecipitation: 5  $\mu$ g/200  $\mu$ L of *E. coli* lysate (PM022, PM022S)  
 20  $\mu$ L/200  $\mu$ g of *E. coli* lysate (PM022-8)

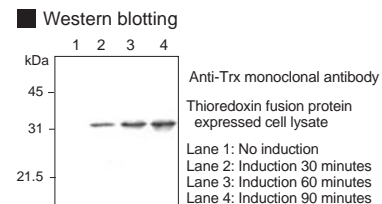


# Trx (Thioredoxin)

## Anti-Trx (Thioredoxin) monoclonal antibody

Code No.	Product	Clone	Isotype	Size	Applications
M013-3	anti-Trx-Tag	2C9	mo IgG1 $\kappa$	0.1 mg	WB, WWB
M013-3S	anti-Trx-Tag	2C9	mo IgG1 $\kappa$	10 $\mu$ L (10x diluted)	WB, WWB

Immunogen: *E. coli* thioredoxin (trxA, 109 a.a.)  
 Specificity: Reacts with *E. coli* Trx and Trx-tag fusion protein.  
 Concentration: 1.0 mg/mL IgG in PBS/50% glycerol  
 Application: Western blotting: 1 :1000 for chemiluminescence detection system  
 West-western blotting: Can be used.

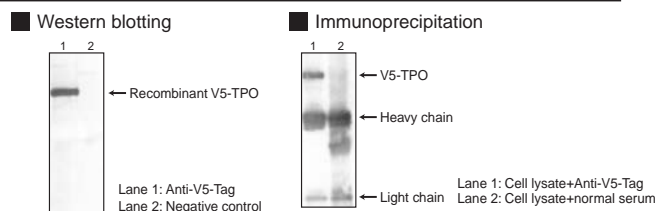


# V5-Tag

## Anti-V5-Tag polyclonal antibody

Code No.	Product	Clone	Isotype	Size	Applications
PM003	anti-V5-Tag	Polyclonal	rab IgG	0.1 mL	WB, IPP
PM003S	anti-V5-Tag	Polyclonal	rab IgG	50 $\mu$ L (10x diluted)	WB, IPP
PM003-8	anti-V5-Tag-Agarose	Polyclonal	rab IgG	0.4 mL	IPP

Immunogen: V5-Tag (GKPIPNLLGLDST)  
 Form: In PBS /50% glycerol  
 Application: Western blotting: 1:2000  
 Immunoprecipitation: 5  $\mu$ L/100  $\mu$ L of cell extract (PM003, PM003S)  
 20  $\mu$ L/1  $\mu$ g of recombinant protein (PM003-8)



Application: WB: Western blotting, IPP: Immunoprecipitation, FCM: Flow Cytometry, IC: Immunocytochemistry, IH: Immunohistochemistry, IF: Immunofluorescence, WWB: West-Western blotting  
 Isotype; mo: Mouse, rab: Rabbit

To order or for more information, go to [www.mblintl.com](http://www.mblintl.com)

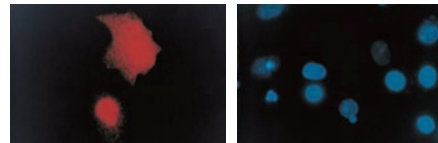
# VSV-G-Tag

## Anti-VSV-G-Tag polyclonal antibody

Code No.	Product	Clone	Isotype	Size	Applications
563	anti-VSV-G-Tag	Polyclonal	rab IgG	0.1 mg	WB, IC
563-5	anti-VSV-G-Tag	Polyclonal	rab IgG	0.5 mg	WB, IC
563S	anti-VSV-G-Tag	Polyclonal	rab IgG	10 µL	WB, IC
563-8	anti-VSV-G-Tag--Agarose	Polyclonal	rab IgG	0.4 mL	IPP

Immunogen: YTDIEMNRLGK (VSV-G tag)-KLH  
 Concentration: 1.0 mg/mL IgG in PBS/0.1% NaN<sub>3</sub>  
 Application: Western blotting: 10 µg/mL  
 Immunocytochemistry: 10 µg/mL (563, 563-5, 563-S)  
 20 µL/100 µL of cell extract (563-8)

■ Immunocytochemistry: VSV-G-IκB transfected into BHK21 cells



Anti-VSV-G antibody (563)

Hoechst staining

Photos were provided by Dr. Futoshi Shibasaki and Dr. Frank McKeon, Department of Cell Biology, Harvard Medical School.

## Anti-CoralHue® Fluorescent Proteins

## Amalgaam

Code No.	Product	Clone	Isotype	Size	Applications
M102-3	anti-CoralHue® Azami-Green	2F11	mo IgG1κ	0.1 mg	WB
M102-3S	anti-CoralHue® Azami-Green	2F11	mo IgG1κ	10 µL	WB
M103-3	anti-CoralHue® Azami-Green	3D10	mo IgG2ακ	0.1 mg	IPP
M103-3S	anti-CoralHue® Azami-Green	3D10	mo IgG2ακ	10 µL	IPP
PM011	anti-CoralHue® Azami-Green	Polyclonal	rab IgG	0.1 mg	WB
PM011S	anti-CoralHue® Azami-Green	Polyclonal	rab IgG	10 µL	WB
M117-3	anti-CoralHue® Dronpa-Green	4D12	mo IgG2α	0.1 mg	WB
M118-3	anti-CoralHue® Dronpa-Green	2F6	mo IgG2b	0.1 mg	IPP
M106-3	anti-CoralHue® Kaede	2F4	mo IgG1κ	0.1 mg	IPP
M106-3S	anti-CoralHue® Kaede	2F4	mo IgG1κ	10 µL	IPP
PM012	anti-CoralHue® Kaede	Polyclonal	rab IgG	0.5 mg	WB
PM012S	anti-CoralHue® Kaede	Polyclonal	rab IgG	10 µL	WB
M125-3	anti-CoralHue® Kaede	3B1	mo IgG1	0.1 mg	WB
M126-3	anti-CoralHue® Keima-Red	2F7	mo IgG2α	0.1 mg	WB
M127-3	anti-CoralHue® Keima-Red	3C9	mo IgG1	0.1 mg	IPP
M128-3	anti-CoralHue® Kikume Green-Red	5B3	mo IgG2b	0.1 mg	WB
M129-3	anti-CoralHue® Kikume Green-Red	2D3	mo IgG2b	0.1 mg	IPP
M104-3	anti-CoralHue® Kusabira-Orange	1H7	mo IgG1κ	0.1 mg	WB
M104-3S	anti-CoralHue® Kusabira-Orange	1H7	mo IgG1κ	10 µL	WB
M105-3	anti-CoralHue® Kusabira-Orange	2G9	mo IgG1κ	0.1 mg	IPP
M105-3S	anti-CoralHue® Kusabira-Orange	2G9	mo IgG1κ	10 µL	IPP
M116-3	anti-CoralHue® Midoriishi-Cyan	2C1	mo IgG2b	0.1 mg	IPP
M130-3	anti-CoralHue® Midoriishi-Cyan	5B7	mo IgG1	0.1 mg	WB

Fluorescent proteins were co-developed with the Laboratory for Cell Function and Dynamics, the Advanced Technology Development Center, the Brain Science Institute, and the Institute of Physical and Chemical Research (RIKEN) (lab head Dr. Atsushi Miyawaki).

## Antibodies for Gene Expression



Code No.	Product	Clone	Isotype	Size	Applications
CY-M1027	anti-Adenovirus Hexon	AF-3H12	mo IgG2α	50 µg	IC, FCM, ELISA
CY-M1026	anti-Baculovirus envelope gp64	AF-2C8	mo IgG2α	50 µg	IC, FCM, ELISA

Visit our website at [www.mblintl.com](http://www.mblintl.com) for more information!

Application; WB: Western blotting, IPP: Immunoprecipitation, FCM: Flow Cytometry, IC: Immunocytochemistry, IH: Immunohistochemistry, IF: Immunofluorescence, WWB: West-Western blotting  
 Isotype; mo: Mouse, rab: Rabbit

038252-7022

MBL Group



MBL International Corporation

15 B Constitution Way TEL : (781) 939-6964  
 Woburn, MA 01801, USA (800) 200-5459  
 FAX : (781) 939-6963

URL: <http://www.mblintl.com> e-mail: [info@mbintl.com](mailto:info@mbintl.com)



MEDICAL & BIOLOGICAL LABORATORIES CO., LTD.

5-10 Marunouchi 3 chome, Naka-ku,  
 Nagoya 460-0002, JAPAN

TEL : 81-52-971-2081 FAX : 81-52-971-2337

URL: <http://www.mbl.co.jp>